



3 The Oval, Bicton, Shrewsbury, SY3 8ER

3 bedroom semi-detached house — £340,000 Freehold

3 The Oval, Bicton, Shrewsbury, SY3 8ER

Coopergreenpooks.co.uk

£340,000 Freehold — 3 bedroom semi-detached house

sales@cgpooks.co.uk

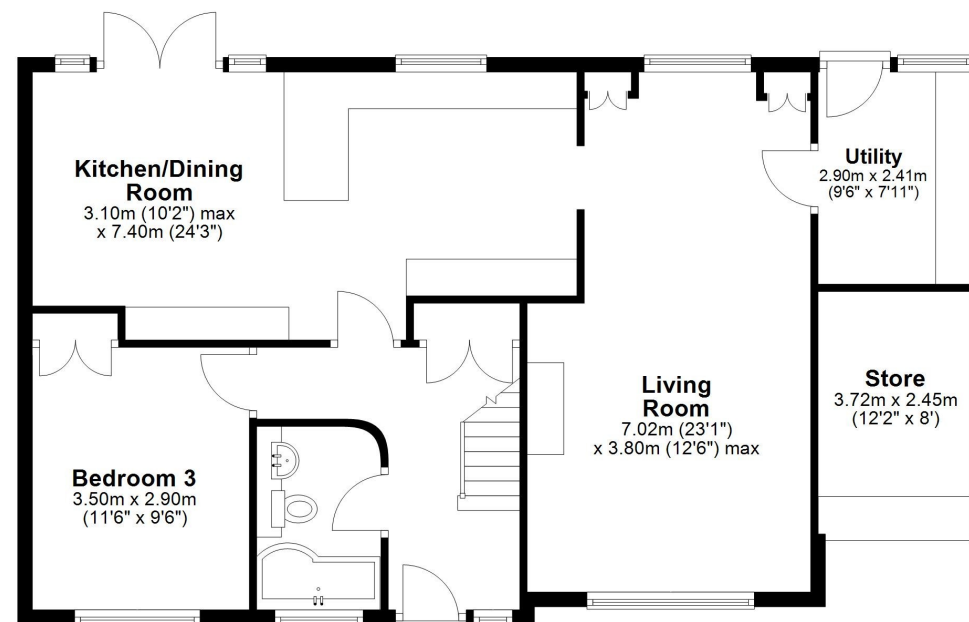
Well situated in the popular Bicton Village just a 5-minute drive from Shrewsbury. This spacious semi-detached home offers impressive accommodation which has been stylishly modernised to a high standard throughout.

KEY FEATURES

- Entrance hall with doors to the living areas, as well as a re fitted bathroom and third double bedroom with built in wardrobe.
- Good sized living room with feature fireplace and windows to both the front and rear.
- Open plan kitchen/dining room with re fitted units and breakfast bar, along with integrated appliances. There are also windows and glazed double doors to the rear garden and access to the living room.
- Good sized separate re fitted utility room which also has a window and part glazed door to rear.
- Staircase from hall to the landing where there are two further double bedrooms. The main bedroom also has a re fitted ensuite shower room.
- Replacement double glazed windows and oil fired central heating.
- Two separate driveways providing parking and also access to former garage/store.
- Attractively landscaped and private rear garden which is mainly lawned with established borders and paved and decked sun terraces.
- Really good location in a quiet and popular village, a short walk from the local primary school and park and just a 5 minute drive from Shrewsbury

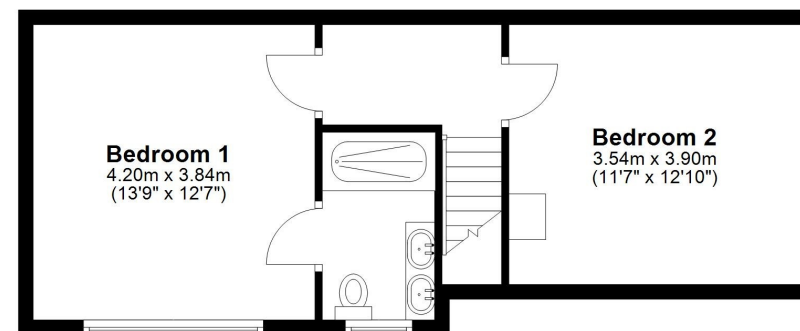
Ground Floor

Approx. 96.7 sq. metres (1041.2 sq. feet)



First Floor

Approx. 39.7 sq. metres (426.9 sq. feet)



Total area: approx. 136.4 sq. metres (1468.1 sq. feet)







3 The Oval, Bicton, Shrewsbury, SY3 8ER

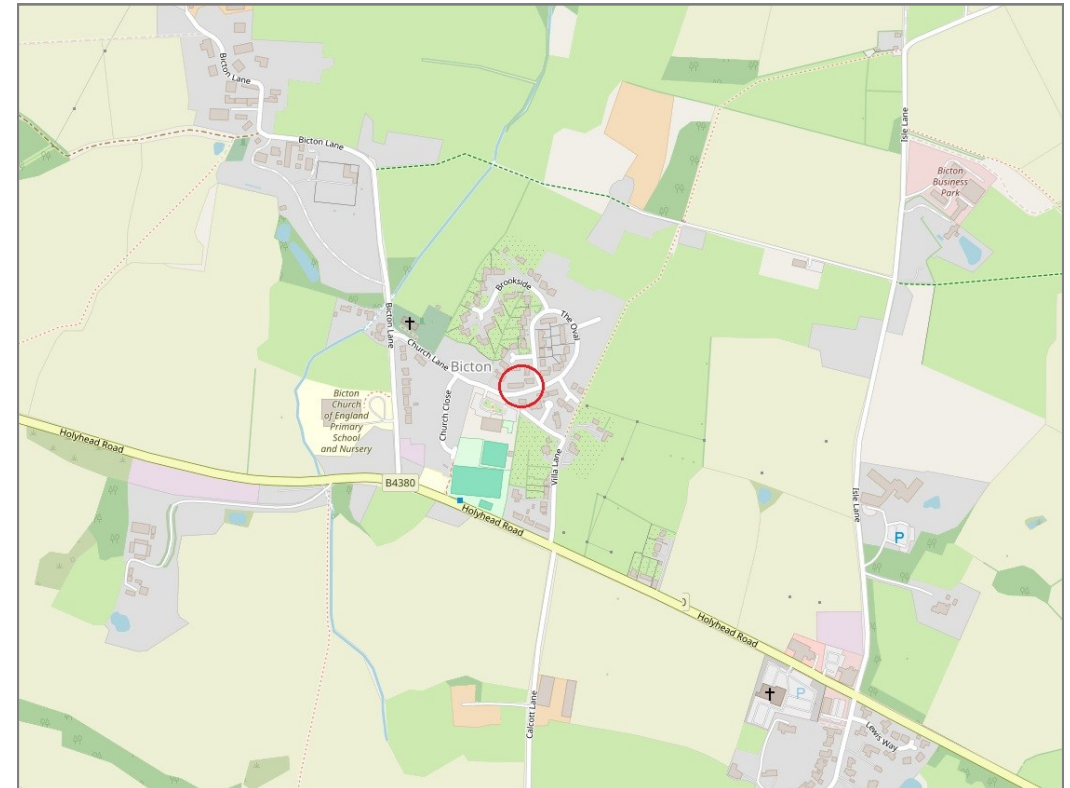
£340,000 Freehold — 3 bedroom semi-detached house

sales@cgpooks.co.uk

rightmove 

 OnTheMarket.com

 **RICS**
Regulated by RICS



BOUNDARIES NOT CONFIRMED

Tenure	Freehold
Local Authority	Shropshire Council
Council Tax	Band D
EPC Band	Band E
Services	Mains water, electricity and drainage are connected. Oil fired central heating.

 **Expert mortgage advice available**

3 Barker St, Shrewsbury SY1 1QF

Cooper Green Pooks
01743 276666



Your home may be repossessed if you do not keep up repayments on your mortgage.

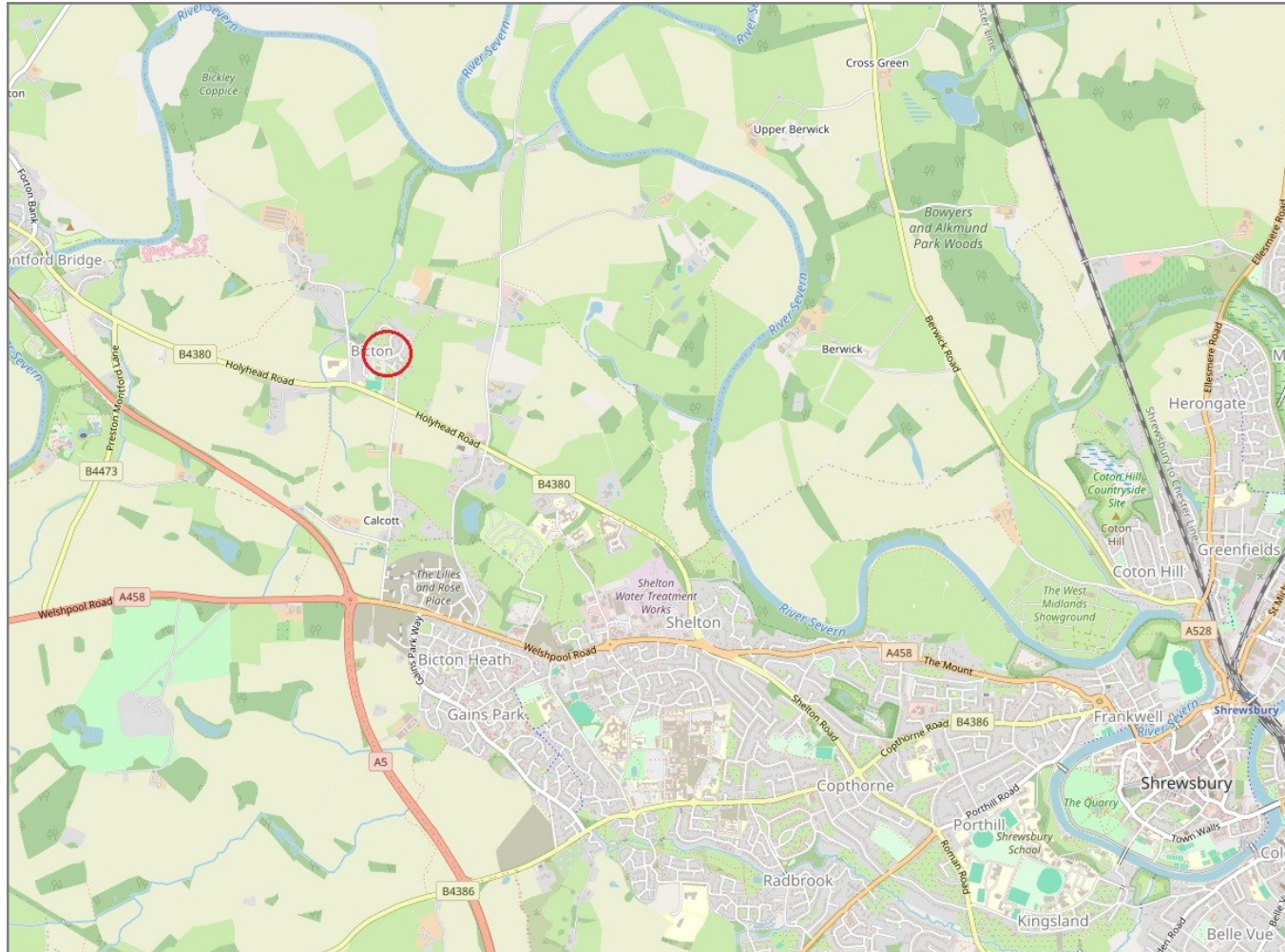
There may be a fee for mortgage advice. The actual amount you pay will depend upon your circumstances. The fee is up to 1% but a typical fee is 0.3% of the amount borrowed.

3 The Oval, Bicton, Shrewsbury, SY3 8ER

Coopergreenpooks.co.uk

£340,000 Freehold — 3 bedroom semi-detached house

sales@cgpooks.co.uk



IMPORTANT NOTICE: Cooper Green Pooks for themselves and for the lessors or vendors of this property whose agents they are give notice that: 1 No appliances, services or service installations have been tested and no warranty as to suitability or serviceability is implied. Any prospective purchaser or lessee is advised to obtain verification from their surveyor or solicitor. 2. The particulars are set out as a general outline only for the guidance of the intended purchasers or lessees and do not constitute, nor constitute part of, an offer or contract. 3. All descriptions, reference to condition and necessary permissions for use and occupation and other details are given in good faith and are believed to be correct but any intending purchasers or lessees should not rely on them as statements or representation of fact but satisfy themselves by inspection or otherwise as to the correctness of each of them. 4. No person in the employment of Cooper Green Pooks has any authority to make or give any representation or warranty whatsoever in relation to this property. 5. All rentals and prices are quoted exclusive of Stamp Duty, legal and surveyors fees and any other associated purchasers or lessees costs. 6. Floor plans are indicative only and should not be relied on. 7. The plan showing the boundary of the property is indicative only and has not been checked against the legal title so should not be relied on. 8. All dimensions, floor areas and site areas are only approximate and should not be relied on. Dimensions are generally maximum room dimension.