



15 Aldwick Drive, Radbrook, Shrewsbury, SY3 6BN

2 bedroom semi-detached house—£247,500 Freehold

15 Aldwick Drive, Radbrook, Shrewsbury, SY3 6BN

Coopergreenpooks.co.uk

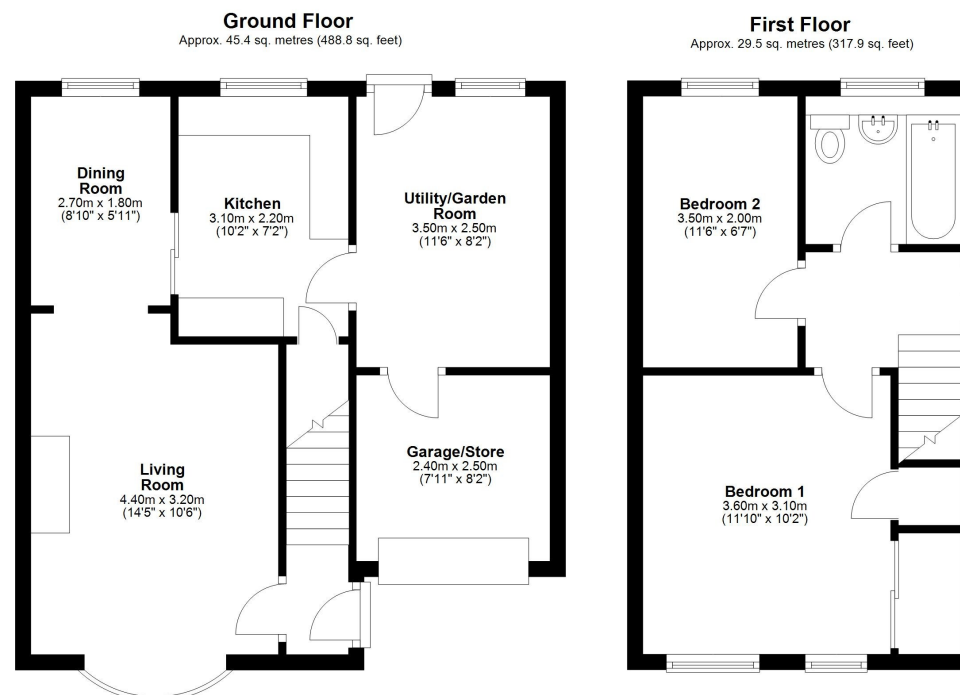
£247,500 Freehold—2 bedroom semi-detached house

sales@cgpooks.co.uk

Situated on a quiet cul-de-sac within a sought-after residential area, this two bedroom semi-detached house offers neatly presented and practical accommodation, while benefitting from a lovely outlook to the rear, private south-facing garden, driveway parking and attached garage with utility/garden room.

KEY FEATURES

- Entrance hall opening to a good-sized living room with feature fireplace and bow window to front
- Separate dining room, which is open plan to the living room and has a sliding door to the kitchen
- A range of fitted units to the kitchen with space for appliances and useful under stairs pantry
- The attached garage has been re-configured to create a utility/garden room which has access to both the garden and kitchen, as well as a retained store with up and over door to the front
- On the first floor are two bedrooms and a family bathroom with shower. Bedroom one also has built-in wardrobes
- uPVC double glazed windows and gas fired central heating
- South facing private rear garden, laid to lawn with a paved terrace and garden borders
- To the front of the property is a driveway providing parking, and an adjoining lawned garden
- A quiet and convenient location, just a short distance from Radbrook's excellent range of amenities, primary and secondary schools, road links via the bypass and less than two miles from the town centre
- Sold vacant with no upward chain



Total area: approx. 74.9 sq. metres (806.7 sq. feet)









15 Aldwick Drive, Radbrook, Shrewsbury, SY3 6BN

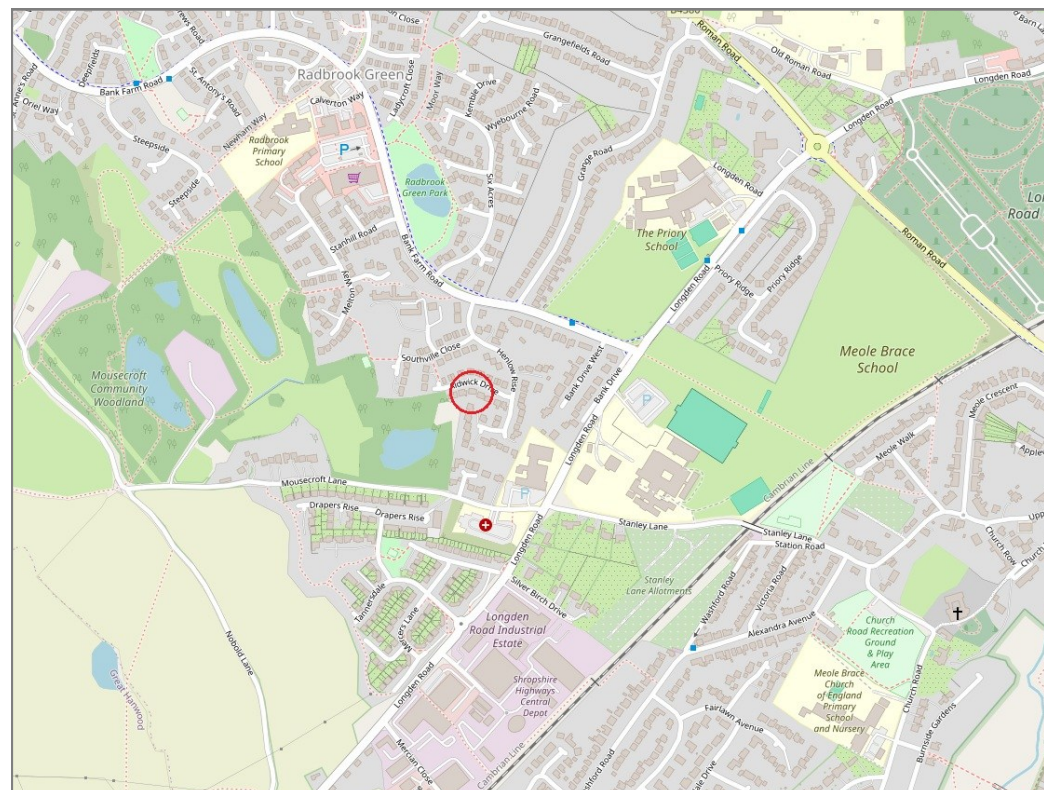
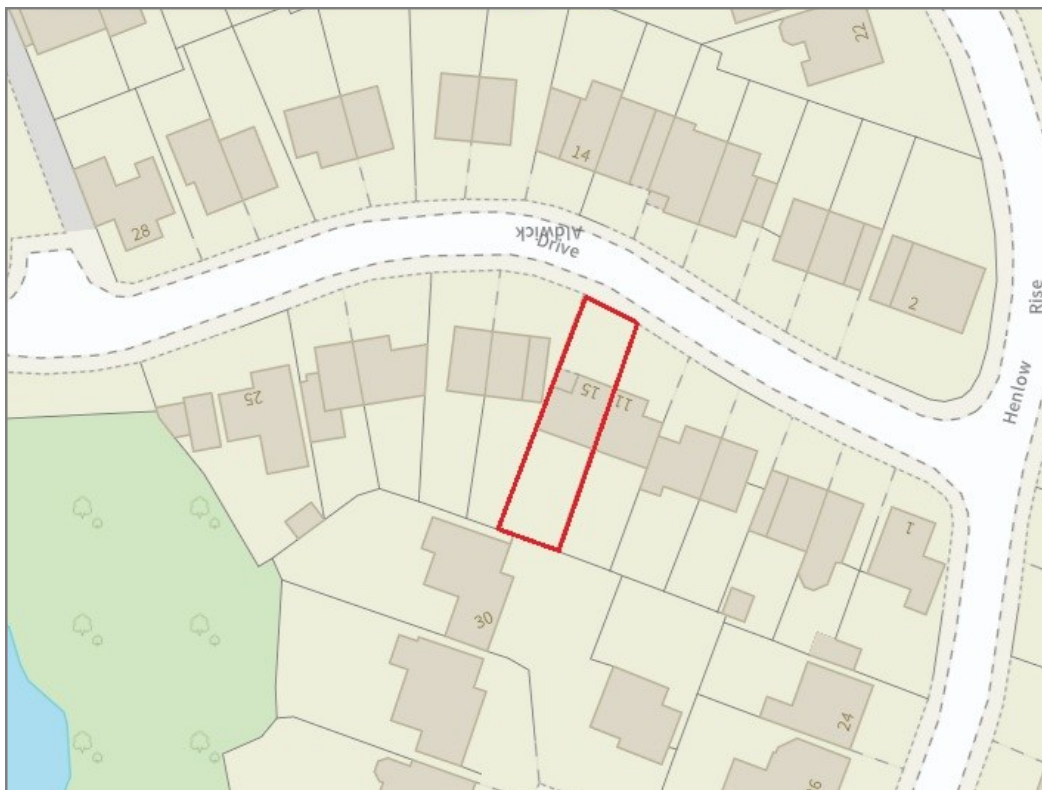
£247,500 Freehold—2 bedroom semi-detached house

sales@cgpooks.co.uk

rightmove 

 OnTheMarket.com

 **RICS**
Regulated by RICS



BOUNDARIES NOT CONFIRMED

Tenure	Freehold
Local Authority	Shropshire Council
Council Tax	Band B
EPC Band	Band C
Services	All mains services are connected

 **Expert mortgage advice available**

3 Barker St, Shrewsbury SY1 1QF

Cooper Green Pooks
01743 276666



Your home may be repossessed if you do not keep up repayments on your mortgage.

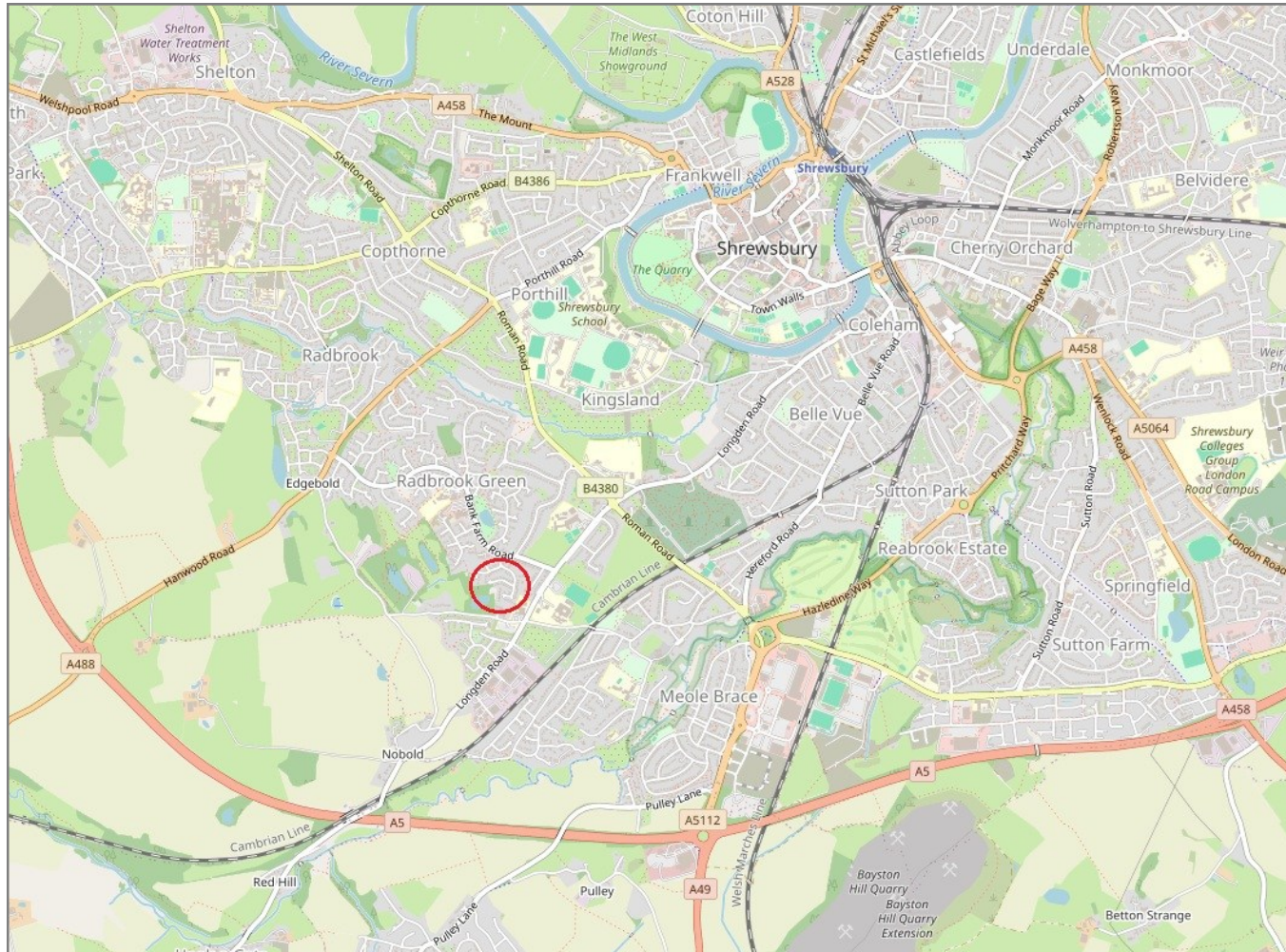
There may be a fee for mortgage advice. The actual amount you pay will depend upon your circumstances. The fee is up to 1% but a typical fee is 0.3% of the amount borrowed.

15 Aldwick Drive, Radbrook, Shrewsbury, SY3 6BN

Coopergreenpooks.co.uk

£247,500 Freehold—2 bedroom semi-detached house

sales@cgpooks.co.uk



IMPORTANT NOTICE: Cooper Green Pooks for themselves and for the lessors or vendors of this property whose agents they are give notice that: 1 No appliances, services or service installations have been tested and no warranty as to suitability or serviceability is implied. Any prospective purchaser or lessee is advised to obtain verification from their surveyor or solicitor. 2. The particulars are set out as a general outline only for the guidance of the intended purchasers or lessees and do not constitute, nor constitute part of, an offer or contract. 3. All descriptions, reference to condition and necessary permissions for use and occupation and other details are given in good faith and are believed to be correct but any intending purchasers or lessees should not rely on them as statements or representation of fact but satisfy themselves by inspection or otherwise as to the correctness of each of them. 4. No person in the employment of Cooper Green Pooks has any authority to make or give any representation or warranty whatsoever in relation to this property. 5. All rentals and prices are quoted exclusive of Stamp Duty, legal and surveyors fees and any other associated purchasers or lessees costs. 6. Floor plans are indicative only and should not be relied on. 7. The plan showing the boundary of the property is indicative only and has not been checked against the legal title so should not be relied on. 8. All dimensions, floor areas and site areas are only approximate and should not be relied on. Dimensions are generally maximum room dimension.