



101 Leighton Park, Shrewsbury, SY3 5FS

1 bedroom ground floor apartment — £197,500 Leasehold

101 Leighton Park, Shrewsbury, SY3 5FS

Coopergreenpooks.co.uk

£197,500 Leasehold — 1 bedroom ground floor apartment

sales@cgpooks.co.uk

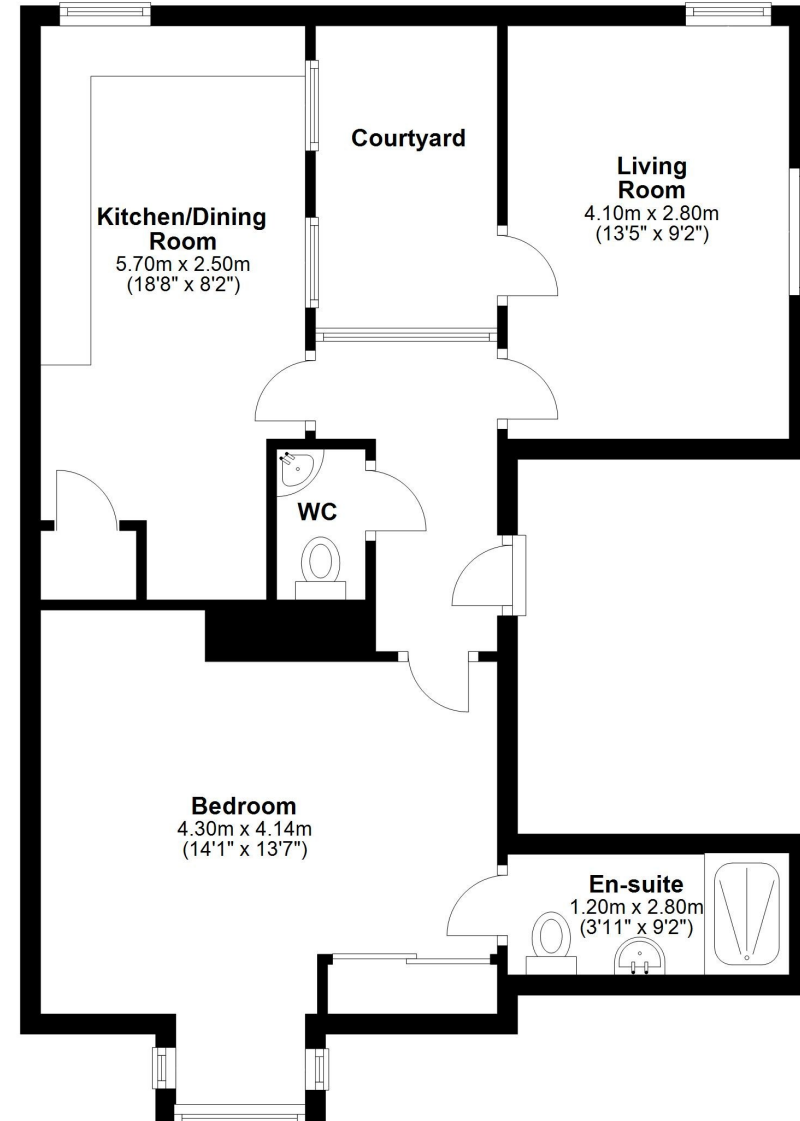
This unique and very attractive ground floor apartment offers well presented and stylish accommodation with its own private courtyard garden. The property is located within the impressive Leighton Park development, which is just 2 miles from the town centre and set in beautiful, secluded grounds adjoining the Shelton cricket club

KEY FEATURES

- Entrance hall with cloakroom and large feature window to private courtyard
- Living room with wood effect flooring, windows to 2 elevations and door to courtyard
- Open plan kitchen/dining room with tiled flooring and a range of fitted units with integrated appliances. There is also a built-in store and further feature windows overlooking courtyard
- Good sized double bedroom with wood effect flooring, built in wardrobe and bay window to front
- Well fitted en-suite shower room
- Double glazed windows and gas fired central heating
- Lovely private paved and walled courtyard garden with power and light
- Allocated parking space and additional visitors parking available
- Fantastic position within a peaceful and well-designed development, set in extensive private grounds of the former Shelton hospital, which was recently converted by Shropshire homes
- Next to the impressive Shelton cricket club and pitches, as well as bowling green. The property is also just a short walk from the Bicton shopping complex and supermarket, as well as other amenities including a good pub and restaurant

Ground Floor

Approx. 57.3 sq. metres (617.1 sq. feet)



Total area: approx. 57.3 sq. metres (617.1 sq. feet)







101 Leighton Park, Shrewsbury, SY3 5FS

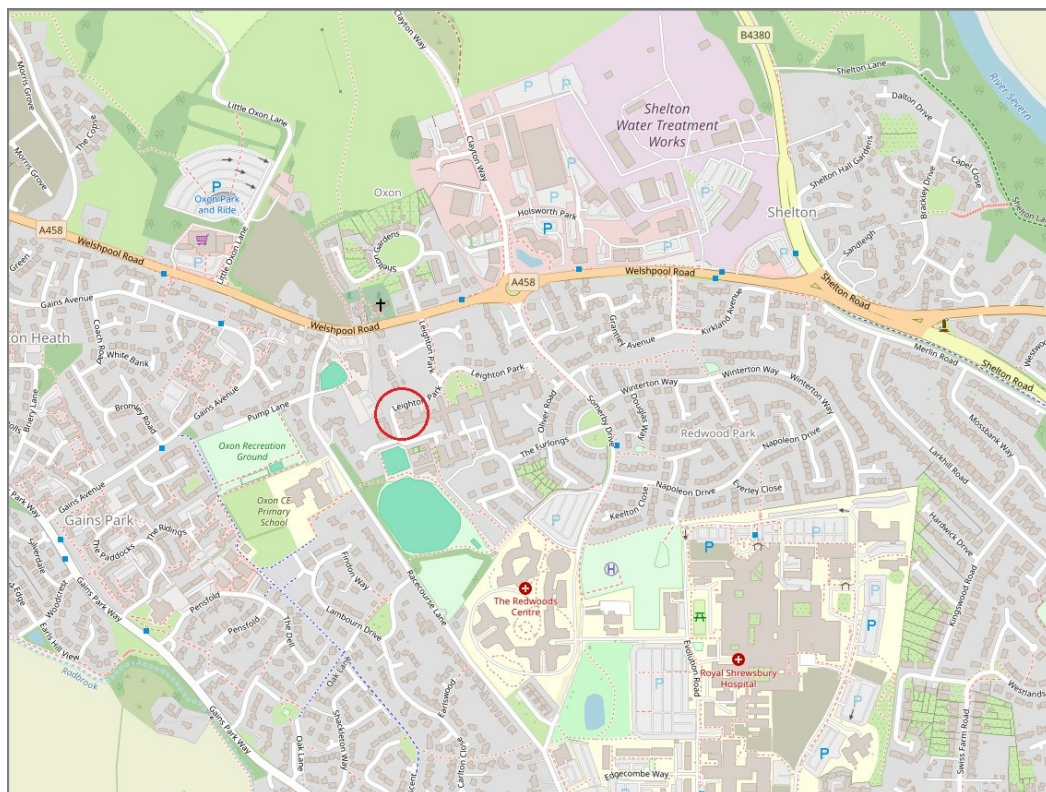
£197,500 Leasehold — 1 bedroom ground floor apartment

sales@cgpooks.co.uk

rightmove 

 onTheMarket™.com

 **RICS**
Regulated by RICS



Local Authority
Council Tax
EPC
Services

Shropshire Council
Band B
Band C
All mains services are connected

Tenure
Lease Length
Service Charge
Ground Rent

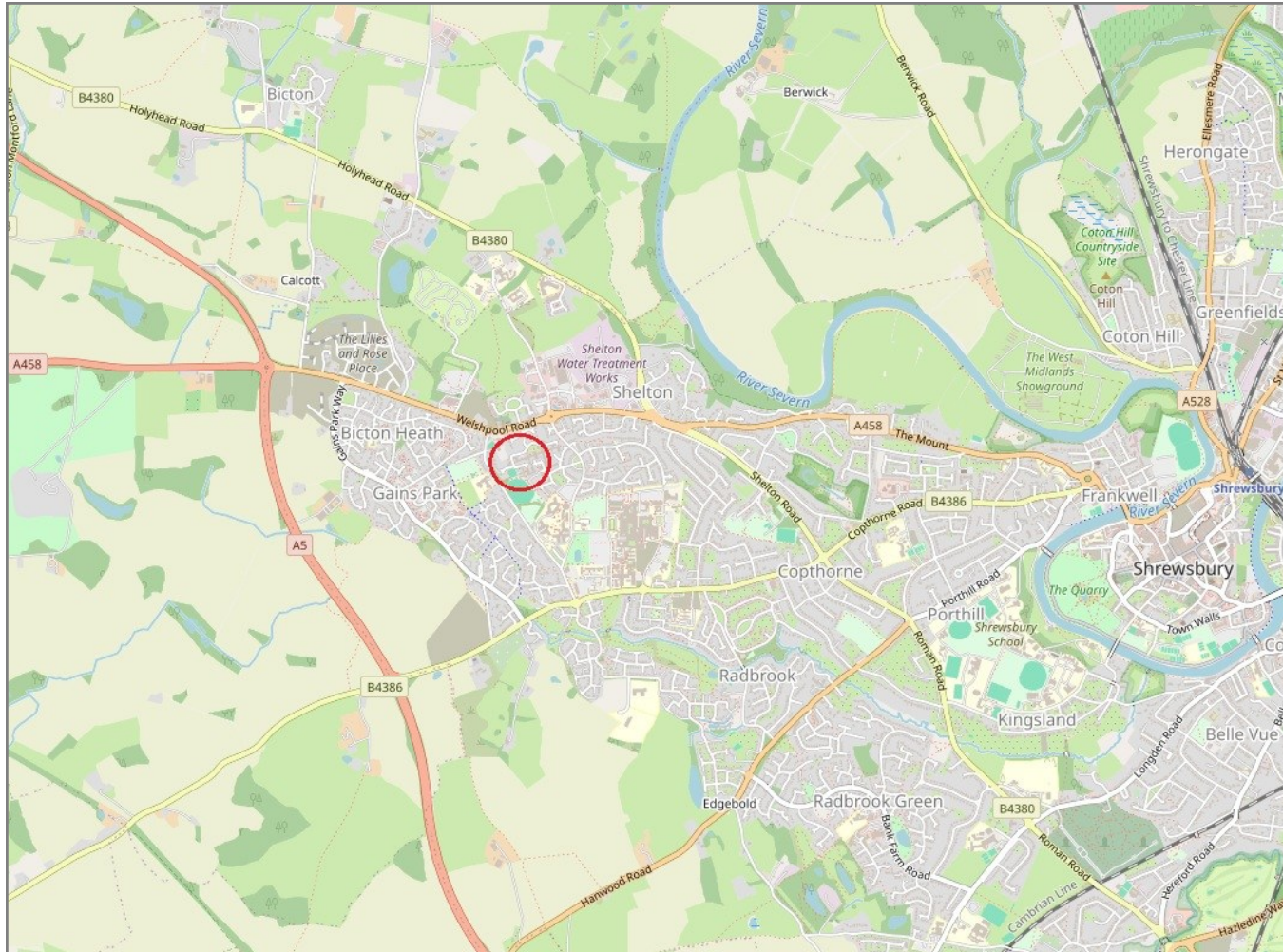
Leasehold
199 years from 2016
£1,652 per annum
£230 per annum

101 Leighton Park, Shrewsbury, SY3 5FS

Coopergreenpooks.co.uk

£197,500 Leasehold — 1 bedroom ground floor apartment

sales@cgpooks.co.uk



IMPORTANT NOTICE: Cooper Green Pooks for themselves and for the lessors or vendors of this property whose agents they are give notice that: 1 No appliances, services or service installations have been tested and no warranty as to suitability or serviceability is implied. Any prospective purchaser or lessee is advised to obtain verification from their surveyor or solicitor. 2. The particulars are set out as a general outline only for the guidance of the intended purchasers or lessees and do not constitute, nor constitute part of, an offer or contract. 3. All descriptions, reference to condition and necessary permissions for use and occupation and other details are given in good faith and are believed to be correct but any intending purchasers or lessees should not rely on them as statements or representation of fact but satisfy themselves by inspection or otherwise as to the correctness of each of them. 4. No person in the employment of Cooper Green Pooks has any authority to make or give any representation or warranty whatsoever in relation to this property. 5. All rentals and prices are quoted exclusive of Stamp Duty, legal and surveyors fees and any other associated purchasers or lessees costs. 6. Floor plans are indicative only and should not be relied on. 7. The plan showing the boundary of the property is indicative only and has not been checked against the legal title so should not be relied on. 8. All dimensions, floor areas and site areas are only approximate and should not be relied on. Dimensions are generally maximum room dimension.