



37 Dalglish Crescent, Radbrook Village, Shrewsbury, SY3 9FW

4 bedroom detached house — £595,000 Freehold

37 Dagleish Crescent, Radbrook Village, Shrewsbury, SY3 9FW

Coopergreenpooks.co.uk

£595,000 Freehold — 4 bedroom detached house

sales@cgpooks.co.uk

This attractively designed and contemporary detached house offers impressive and versatile accommodation finished to a high standard, with a lovely outlook and beautifully landscaped garden. The property is well situated in a superb position within this sought after and unique development, only 1 mile from the Quarry Park and town centre.

KEY FEATURES

- Light and immaculately presented interior with wood effect parquet flooring throughout most rooms
- Covered entrance area to hall with full length windows, cloakroom, separate utility room and store
- Large open plan living/dining room and kitchen with part vaulted ceiling and roof lights, windows and sliding patio doors to rear garden
- Stylish and extensive range of units to kitchen area with integrated appliances
- Ground floor 4th double bedroom/family room with further sliding patio doors to rear sun terrace, walk-in wardrobe/store and ensuite shower room
- Turning staircase from hall to landing area where there are three further double bedrooms and a family bathroom with separate shower
- Double glazed windows and gas fired central heating which is underfloor on the ground floor
- Private block paved driveway providing parking for about 4 cars and access to a detached single garage
- Good sized lawned rear garden which has been thoughtfully landscaped with large, paved sun terrace
- Quiet and very private setting with a lovely open outlook to both the front and side
- Walking distance from the Radbrook Green shopping complex, as well as various schools including Radbrook and Woodfield primary schools and both Priory and Meole Brace

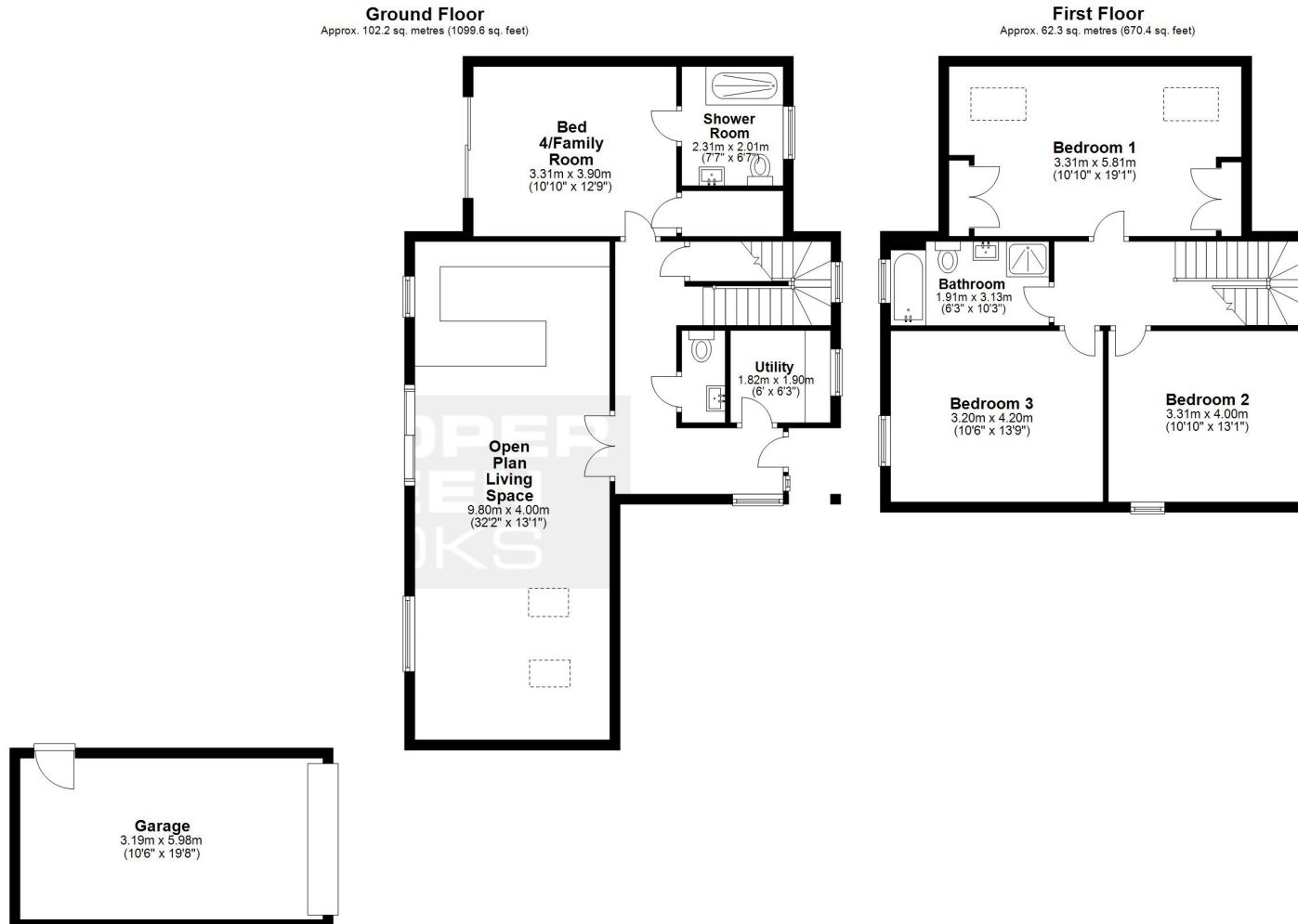


37 Dagleish Crescent, Radbrook Village, Shrewsbury, SY3 9FW

Coopergreenpooks.co.uk

£595,000 Freehold — 4 bedroom detached house

sales@cgpooks.co.uk



Total area: approx. 164.4 sq. metres (1770.0 sq. feet)









37 Dagleish Crescent, Radbrook Village, Shrewsbury, SY3 9FW

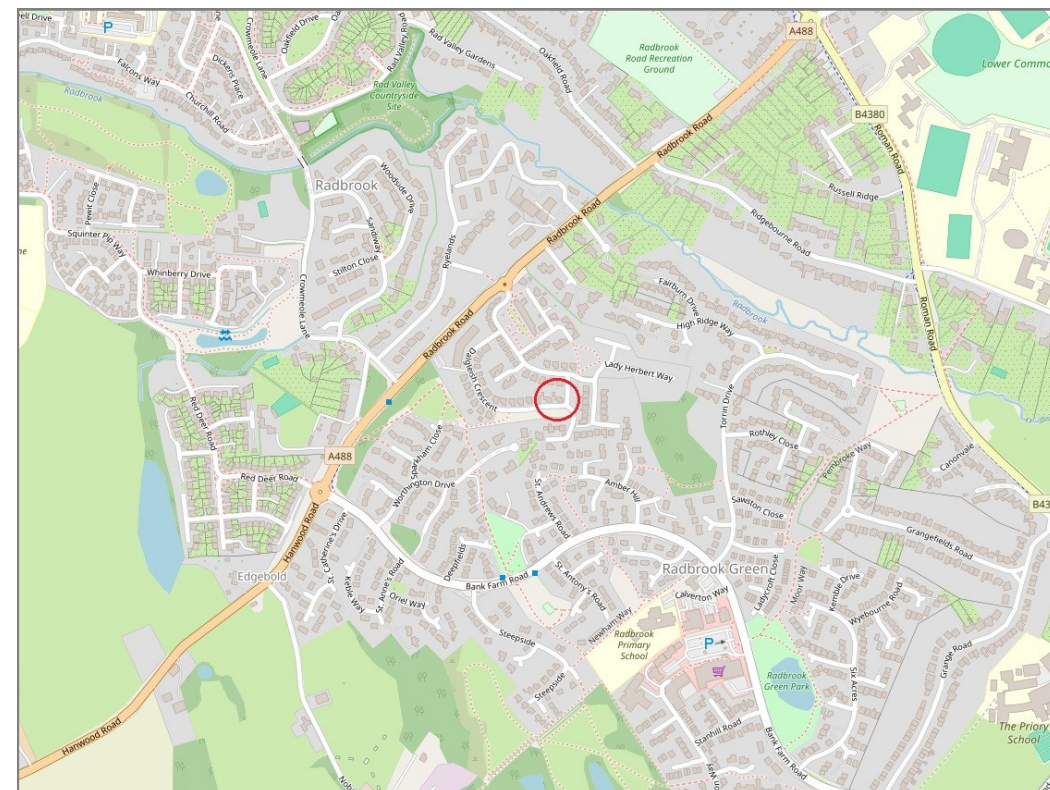
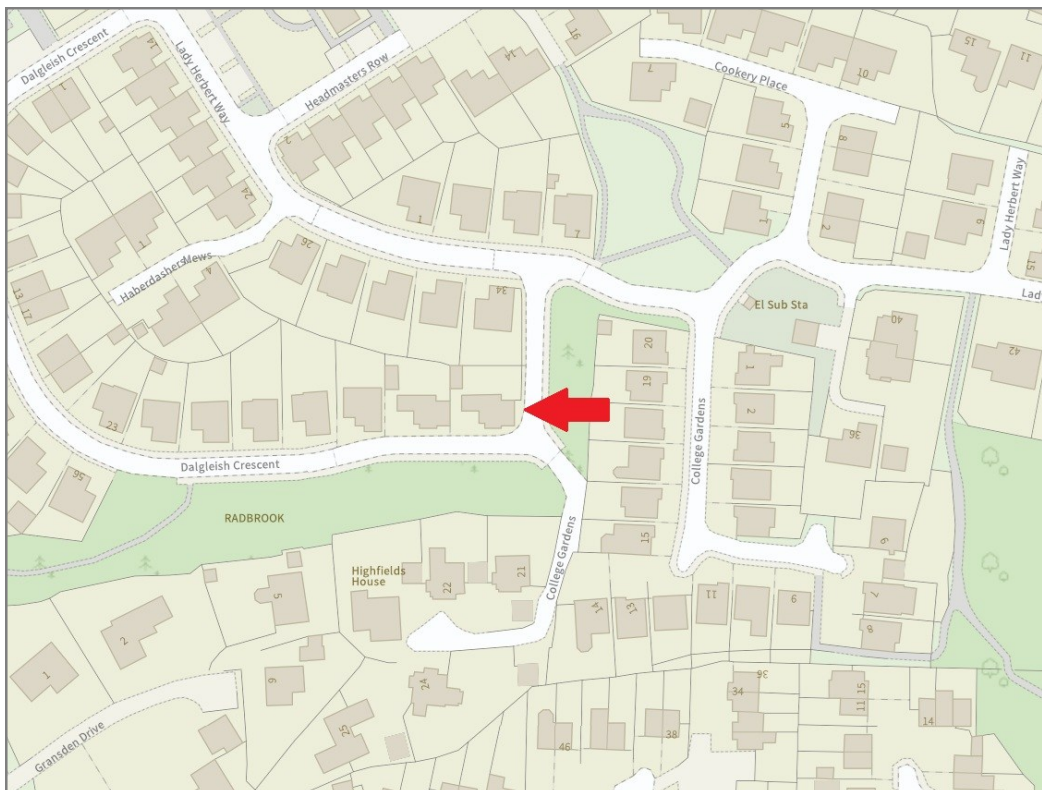
£595,000 Freehold — 4 bedroom detached house

sales@cgpooks.co.uk

rightmove 

 OnTheMarket.com

 **RICS**
Regulated by RICS



BOUNDARIES NOT CONFIRMED

Tenure	Freehold
Local Authority	Shropshire Council
Council Tax	Band F
EPC Band	Band B
Services	All mains services are connected

 **Expert mortgage advice available**

3 Barker St, Shrewsbury SY1 1QF

Cooper Green Pooks
01743 276666



Your home may be repossessed if you do not keep up repayments on your mortgage.

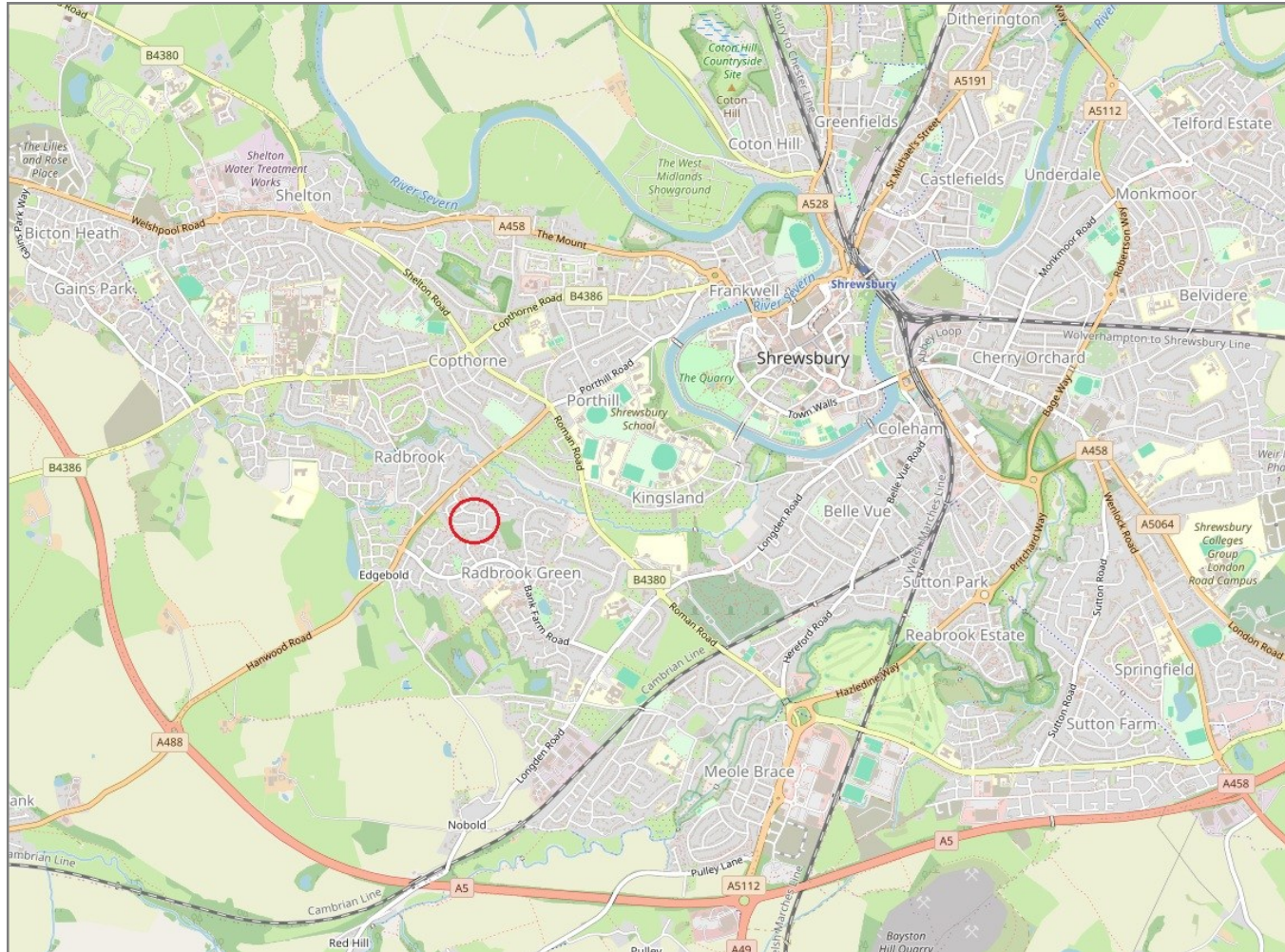
There may be a fee for mortgage advice. The actual amount you pay will depend upon your circumstances. The fee is up to 1% but a typical fee is 0.3% of the amount borrowed.

37 Dalgleish Crescent, Radbrook Village, Shrewsbury, SY3 9FW

Coopergreenpooks.co.uk

£595,000 Freehold — 4 bedroom detached house

sales@cgpooks.co.uk



IMPORTANT NOTICE: Cooper Green Pooks for themselves and for the lessors or vendors of this property whose agents they are give notice that: 1 No appliances, services or service installations have been tested and no warranty as to suitability or serviceability is implied. Any prospective purchaser or lessee is advised to obtain verification from their surveyor or solicitor. 2. The particulars are set out as a general outline only for the guidance of the intended purchasers or lessees and do not constitute, nor constitute part of, an offer or contract. 3. All descriptions, reference to condition and necessary permissions for use and occupation and other details are given in good faith and are believed to be correct but any intending purchasers or lessees should not rely on them as statements or representation of fact but satisfy themselves by inspection or otherwise as to the correctness of each of them. 4. No person in the employment of Cooper Green Pooks has any authority to make or give any representation or warranty whatsoever in relation to this property. 5. All rentals and prices are quoted exclusive of Stamp Duty, legal and surveyors fees and any other associated purchasers or lessees costs. 6. Floor plans are indicative only and should not be relied on. 7. The plan showing the boundary of the property is indicative only and has not been checked against the legal title so should not be relied on. 8. All dimensions, floor areas and site areas are only approximate and should not be relied on. Dimensions are generally maximum room dimension.