



## 6 Kingsland Bridge Mansions, Murivance, Shrewsbury, SY1 1JF

1 bedroom apartment — £235,000 Leasehold (Share of Freehold)

## 6 Kingsland Bridge Mansions, Murivance, Shrewsbury, SY1 1JF

Coopergreenpooks.co.uk

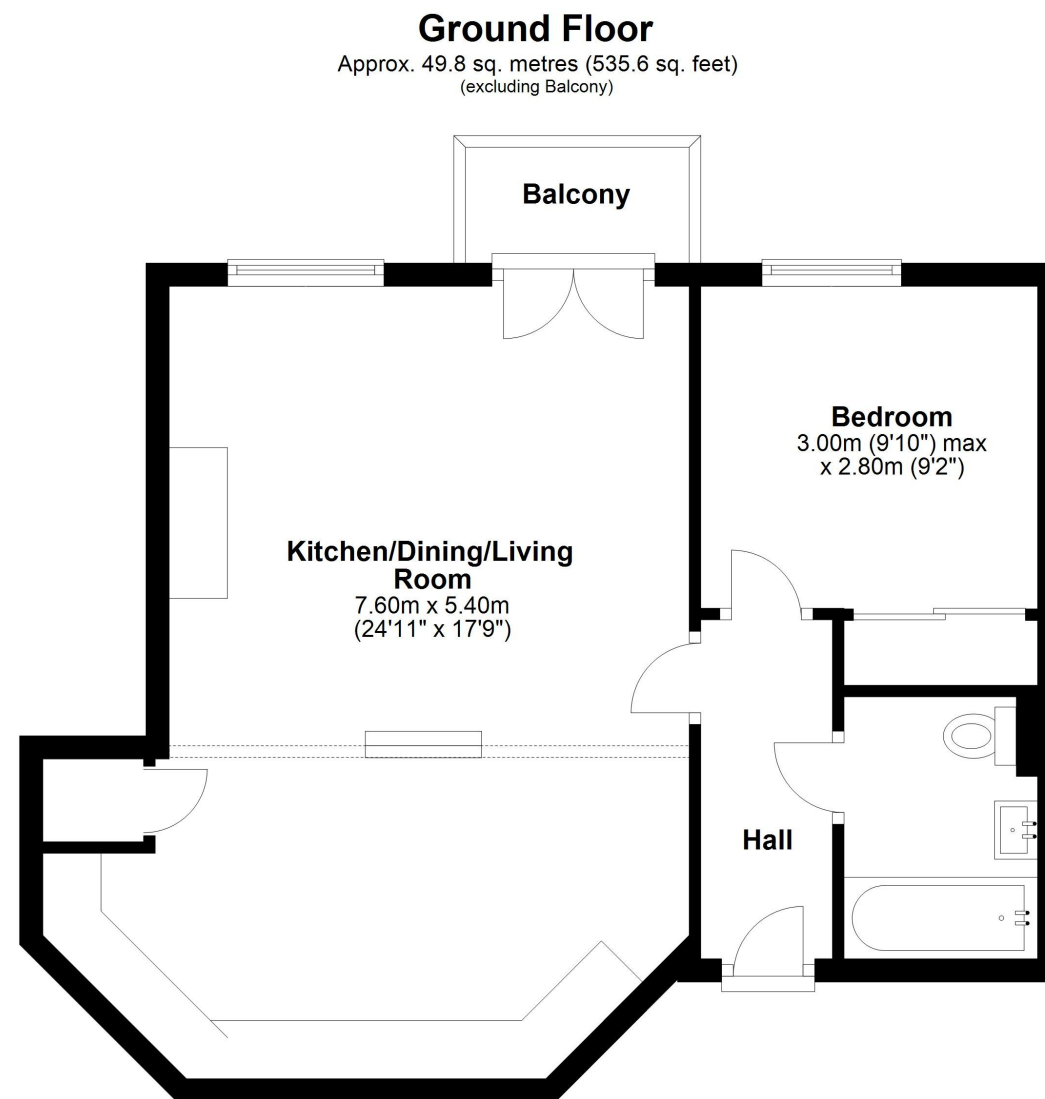
£235,000 Leasehold (Share of Freehold) — 1 bedroom apartment

sales@cgpooks.co.uk

Occupying a fantastic setting on the edge of the Quarry Park, forming part of an impressive grade II listed building of character, this neatly presented apartment offers thoughtfully designed accommodation, with allocated parking and a private south facing balcony with views over landscaped communal gardens. The property is conveniently located at ground floor level from the front entrance of the building, while still being elevated to the rear allowing plenty of natural light.

### KEY FEATURES

- Beautifully presented communal entrance hall with plenty of characterful and individual features
- Private inner hallway with telephone intercom system
- Lovely open plan kitchen/living/dining room with feature fireplace and glazed double doors onto the balcony
- A range of well-fitted units to the kitchen, complete with integrated appliances
- Double bedroom with built-in wardrobes and a separate bathroom with shower
- Double glazed windows and electric heating throughout
- South facing balcony to the rear, overlooking the landscaped communal garden
- Private allocated parking space within the secure residents parking area, as well as bicycle and bin storage
- Stunning communal gardens and various seating areas, offering views towards the Quarry Park and River Severn
- Sold with no upward chain and a share of the freehold









# 6 Kingsland Bridge Mansions, Murivance, Shrewsbury, SY1 1JF

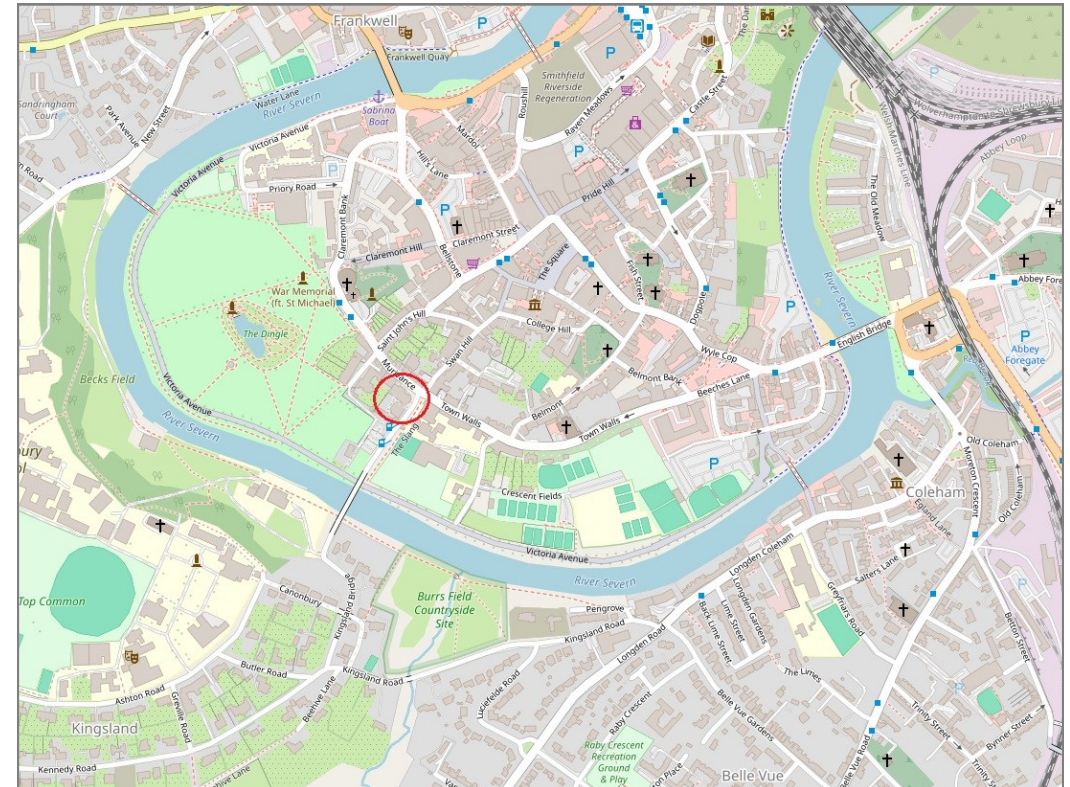
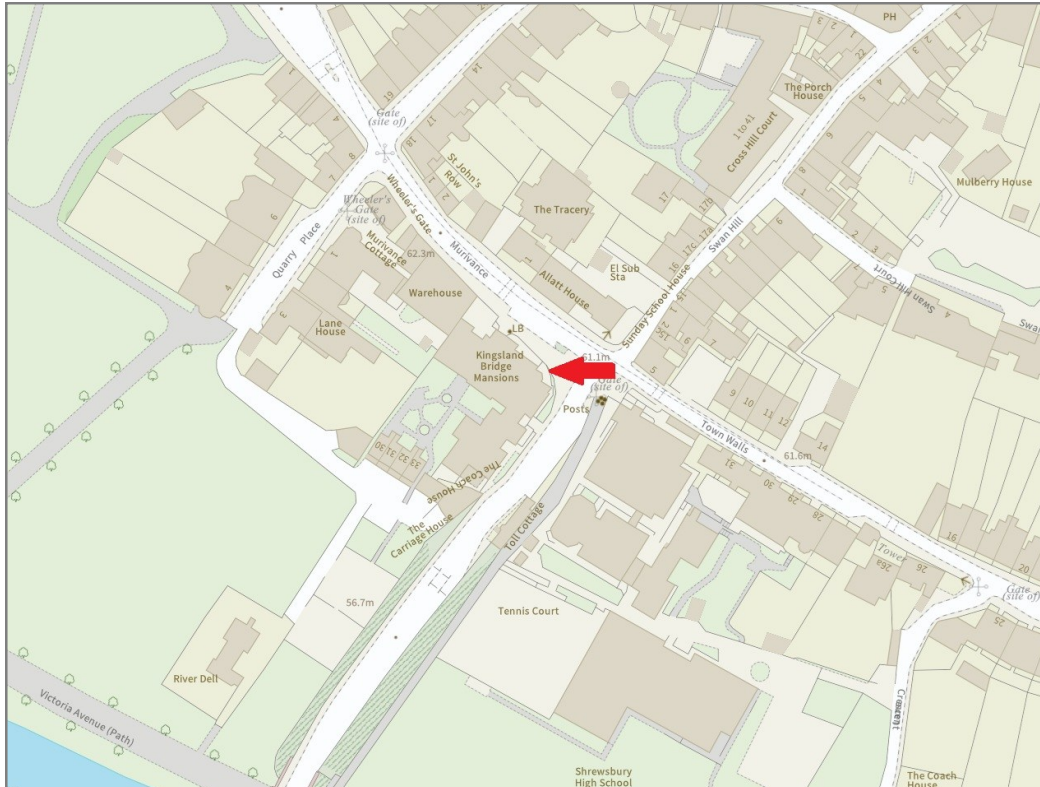
£235,000 Leasehold (Share of Freehold) — 1 bedroom apartment

sales@cgpooks.co.uk

rightmove

onTheMarket.com

RICS  
Regulated by RICS



**BOUNDARIES NOT CONFIRMED**

|                 |   |
|-----------------|---|
| Local Authority | <b>Shropshire Council</b>   |
| Council Tax     | <b>Band D</b>   |
| EPC Band        | <b>Band C</b>   |
| Services        | <b>Mains water, electricity and drainage are connected.<br/>Electric heating.</b> |

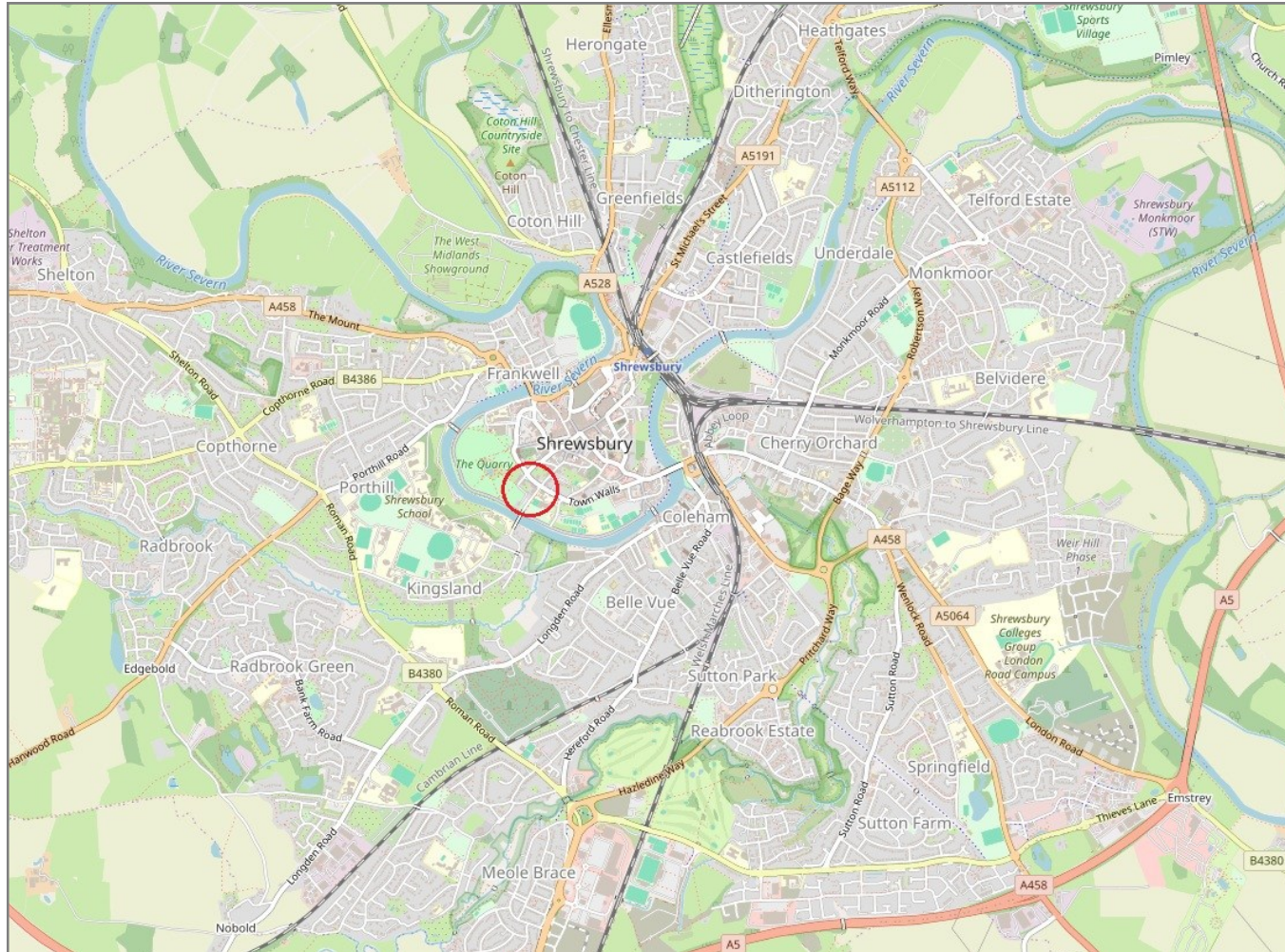
|                |  |
|----------------|--|
| Tenure         | <b>Leasehold (Share of Freehold)</b>             |
| Lease Length   | <b>199 years from 2001 (174 years remaining)</b> |
| Service Charge | <b>£2,065.64</b>                                 |

## 6 Kingsland Bridge Mansions, Murivance, Shrewsbury, SY1 1JF

Coopergreenpooks.co.uk

£235,000 Leasehold (Share of Freehold) — 1 bedroom apartment

sales@cgpooks.co.uk



**IMPORTANT NOTICE:** Cooper Green Pooks for themselves and for the lessors or vendors of this property whose agents they are give notice that: 1 No appliances, services or service installations have been tested and no warranty as to suitability or serviceability is implied. Any prospective purchaser or lessee is advised to obtain verification from their surveyor or solicitor. 2. The particulars are set out as a general outline only for the guidance of the intended purchasers or lessees and do not constitute, nor constitute part of, an offer or contract. 3. All descriptions, reference to condition and necessary permissions for use and occupation and other details are given in good faith and are believed to be correct but any intending purchasers or lessees should not rely on them as statements or representation of fact but satisfy themselves by inspection or otherwise as to the correctness of each of them. 4. No person in the employment of Cooper Green Pooks has any authority to make or give any representation or warranty whatsoever in relation to this property. 5. All rentals and prices are quoted exclusive of Stamp Duty, legal and surveyors fees and any other associated purchasers or lessees costs. 6. Floor plans are indicative only and should not be relied on. 7. The plan showing the boundary of the property is indicative only and has not been checked against the legal title so should not be relied on. 8. All dimensions, floor areas and site areas are only approximate and should not be relied on. Dimensions are generally maximum room dimension.