



**51 Whitfield Crescent, Copthorne Keep, Shrewsbury, SY3 8FD**

4 bedroom detached house — £550,000 Freehold

£550,000 Freehold — 4 bedroom detached house

sales@cgpooks.co.uk

**Occupying a lovely position within a very popular modern development, just a short walk from the Quarry Park and town centre, this neatly presented detached house has been improved and upgraded to provide well-designed accommodation, with a landscaped private garden, pleasant outlook, driveway parking, and integral garage.**

## KEY FEATURES

- Entrance hall with useful storage, large cloakroom, and staircase to a spacious landing
- Good-sized living room with window to front
- Impressive open plan kitchen/dining room, with windows and glazed doors onto the garden, and access to the very practical separate utility
- A range of well-fitted units to the kitchen, complete with integrated appliances
- On the first floor are four generous bedrooms, three of which having bespoke built-in wardrobes, a well-appointed family bathroom, and en-suite shower rooms to bedrooms one and two
- A pleasant outlook from the first floor over the play area and green open space
- Beautiful private rear garden, laid to lawn with a covered patio, gravelled terrace and pergola, planted borders and raised beds. At the end of the garden is a stunning red brick wall, forming part of the original boundary of The Barracks
- Driveway parking for two cars and an integral garage with power, lighting, and internal door to the entrance hall
- Located within a quiet and popular neighbourhood, a short walk from Woodfield and St Georges school, as well as the Quarry park and town centre
- The property was built by reputable builder, Belway Homes, and is still covered by the 10-year new build warranty

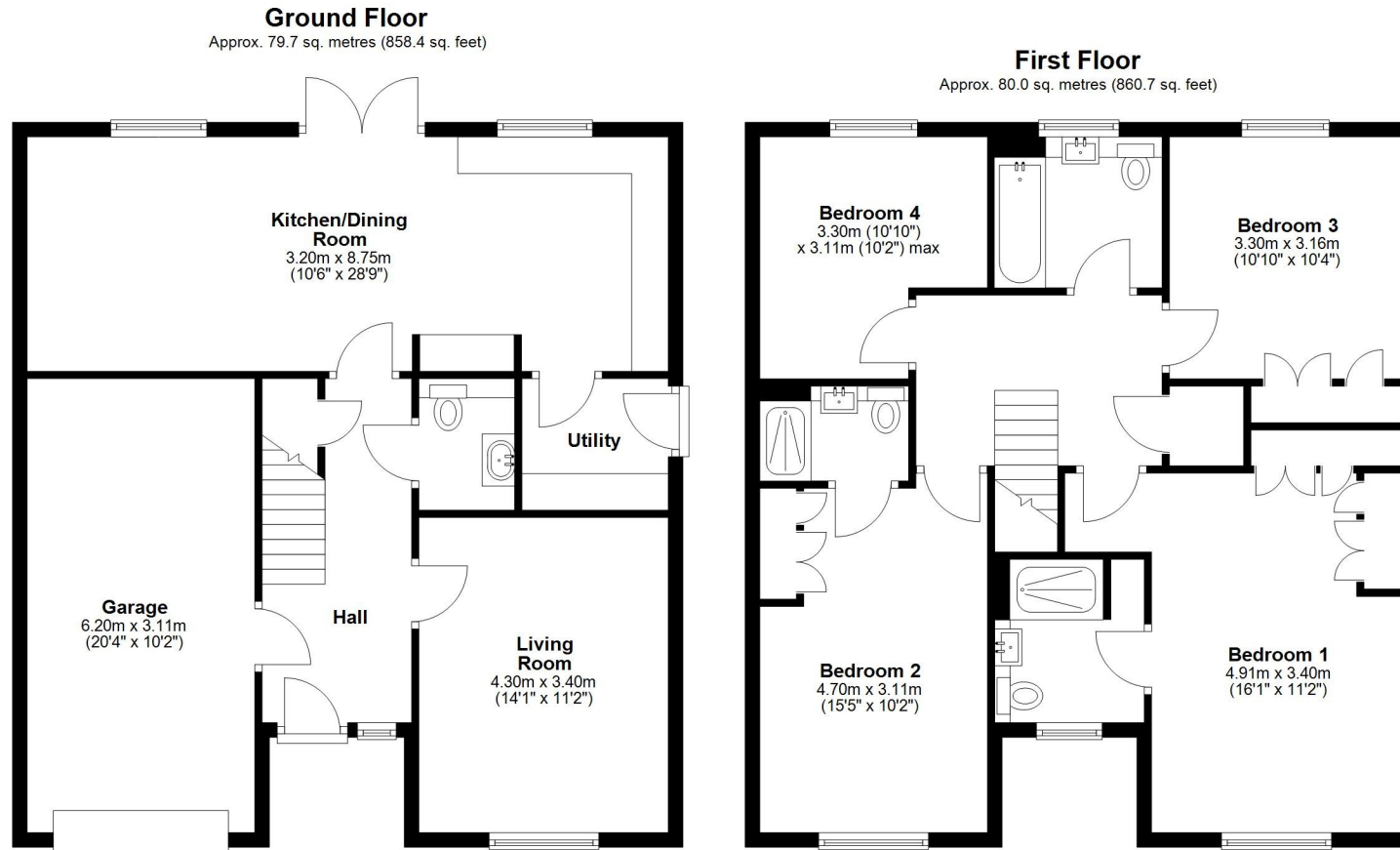


# 51 Whitfield Crescent, Copthorne Keep, Shrewsbury, SY3 8FD

Coopergreenpooks.co.uk

£550,000 Freehold — 4 bedroom detached house

sales@cgpooks.co.uk



Total area: approx. 159.7 sq. metres (1719.1 sq. feet)









# 51 Whitfield Crescent, Copthorne Keep, Shrewsbury, SY3 8FD

£550,000 Freehold — 4 bedroom detached house

sales@cgpooks.co.uk

rightmove 

 OnTheMarket.com

 **RICS**  
Regulated by RICS



**BOUNDARIES NOT CONFIRMED**

Tenure	<b>Freehold</b>
Local Authority	<b>Shropshire Council</b>
Council Tax	<b>Band F</b>
EPC Band	<b>Band B</b>
Services	<b>All mains services are connected</b>

 **Expert mortgage advice available**

3 Barker St, Shrewsbury SY1 1QF

**Cooper Green Pooks**  
**01743 276666**



Your home may be repossessed if you do not keep up repayments on your mortgage.

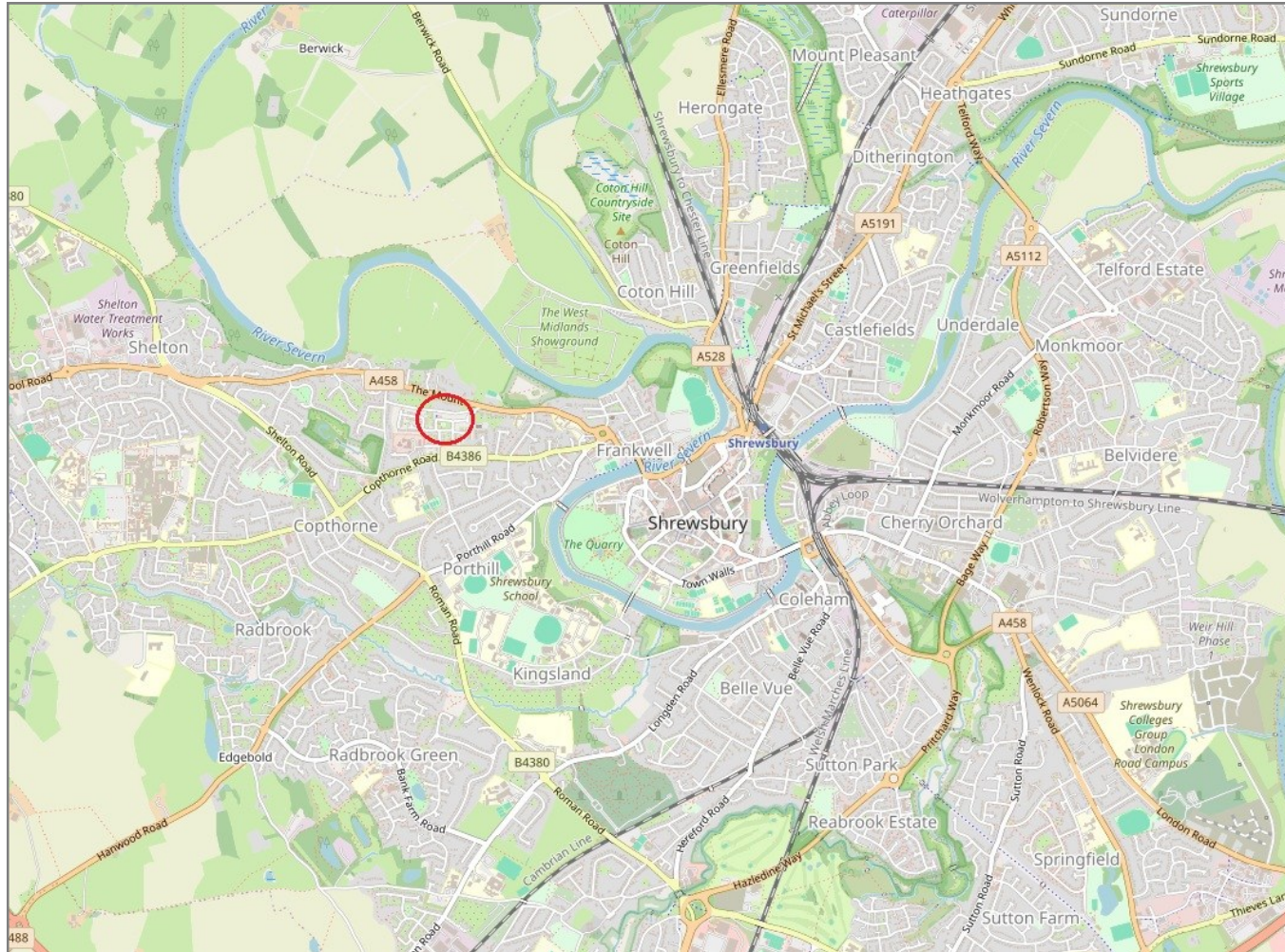
There may be a fee for mortgage advice. The actual amount you pay will depend upon your circumstances. The fee is up to 1% but a typical fee is 0.3% of the amount borrowed.

# 51 Whitfield Crescent, Cophorne Keep, Shrewsbury, SY3 8FD

Coopergreenpooks.co.uk

£550,000 Freehold — 4 bedroom detached house

sales@cgpooks.co.uk



**IMPORTANT NOTICE:** Cooper Green Pooks for themselves and for the lessors or vendors of this property whose agents they are give notice that: 1 No appliances, services or service installations have been tested and no warranty as to suitability or serviceability is implied. Any prospective purchaser or lessee is advised to obtain verification from their surveyor or solicitor. 2. The particulars are set out as a general outline only for the guidance of the intended purchasers or lessees and do not constitute, nor constitute part of, an offer or contract. 3. All descriptions, reference to condition and necessary permissions for use and occupation and other details are given in good faith and are believed to be correct but any intending purchasers or lessees should not rely on them as statements or representation of fact but satisfy themselves by inspection or otherwise as to the correctness of each of them. 4. No person in the employment of Cooper Green Pooks has any authority to make or give any representation or warranty whatsoever in relation to this property. 5. All rentals and prices are quoted exclusive of Stamp Duty, legal and surveyors fees and any other associated purchasers or lessees costs. 6. Floor plans are indicative only and should not be relied on. 7. The plan showing the boundary of the property is indicative only and has not been checked against the legal title so should not be relied on. 8. All dimensions, floor areas and site areas are only approximate and should not be relied on. Dimensions are generally maximum room dimension.