



Newstead, John Street, Castlefields, Shrewsbury, SY1 2SB

3 bedroom semi-detached house — £310,000 Freehold

Newstead, John Street, Castlefields, Shrewsbury, SY1 2SB

Coopergreenpooks.co.uk

£310,000 Freehold — 3 bedroom semi-detached house

sales@cgpooks.co.uk

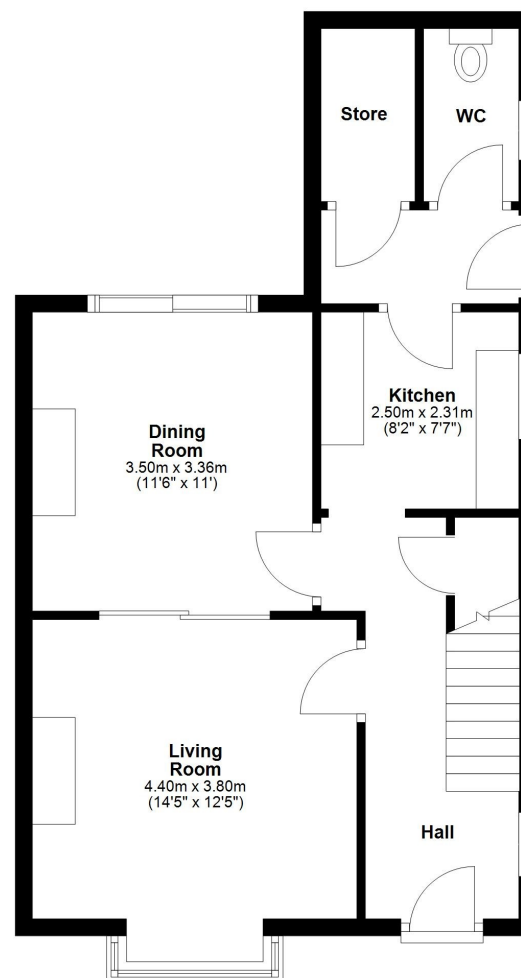
Occupying a great plot with a pleasant outlook over the allotments and towards the river, this well-proportioned semi-detached house offers neatly presented and well-maintained accommodation, with plenty of potential for extension or development subject to necessary planning permission.

KEY FEATURES

- Good sized entrance hall with useful storage and staircase to landing
- Living room with feature fireplace and bay window to front
- Separate dining room, also having a feature fireplace, with sliding doors to the living room and glazed double doors to the rear
- Fitted kitchen with a range of units and space for appliances
- Rear hallway providing access to a store cupboard, WC, and garden
- On the first floor are two double bedrooms, a generous single bedroom, and family bathroom with shower
- uPVC double glazed windows, gas fires to both reception rooms and a gas heater in the hallway
- Private gardens extending to the front, side, and rear of the property, comprising areas of lawn, paved terracing and planted borders
- Due to the size of the plot, there is plenty of potential to extend the existing accommodation, create off street parking, or build a garage/new dwelling, subject to obtaining necessary planning permission
- The property is situated within a very popular residential area, a short walk from Castlefield's excellent amenities, beautiful riverside walks, the train station and town centre

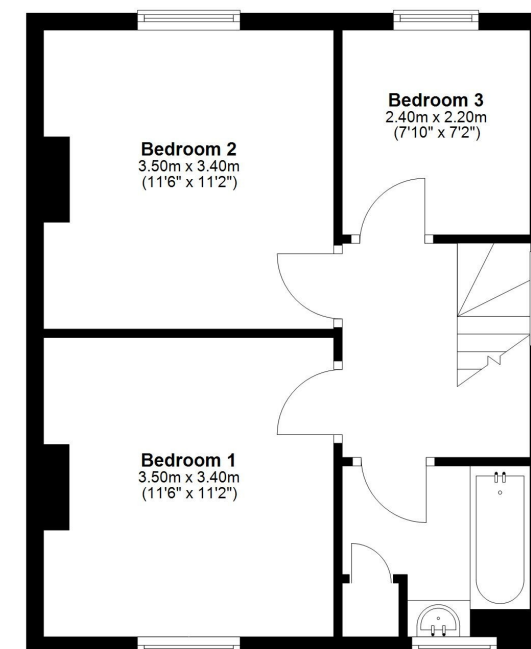
Ground Floor

Approx. 48.5 sq. metres (521.7 sq. feet)



First Floor

Approx. 40.4 sq. metres (434.7 sq. feet)



Total area: approx. 88.9 sq. metres (956.4 sq. feet)









Cooper Green Pooks
3 Barker Street
Shrewsbury
SY1 1QF

www.cgpooks.co.uk
sales@cgpooks.co.uk
01743 276666



Newstead, John Street, Castlefields, Shrewsbury, SY1 2SB

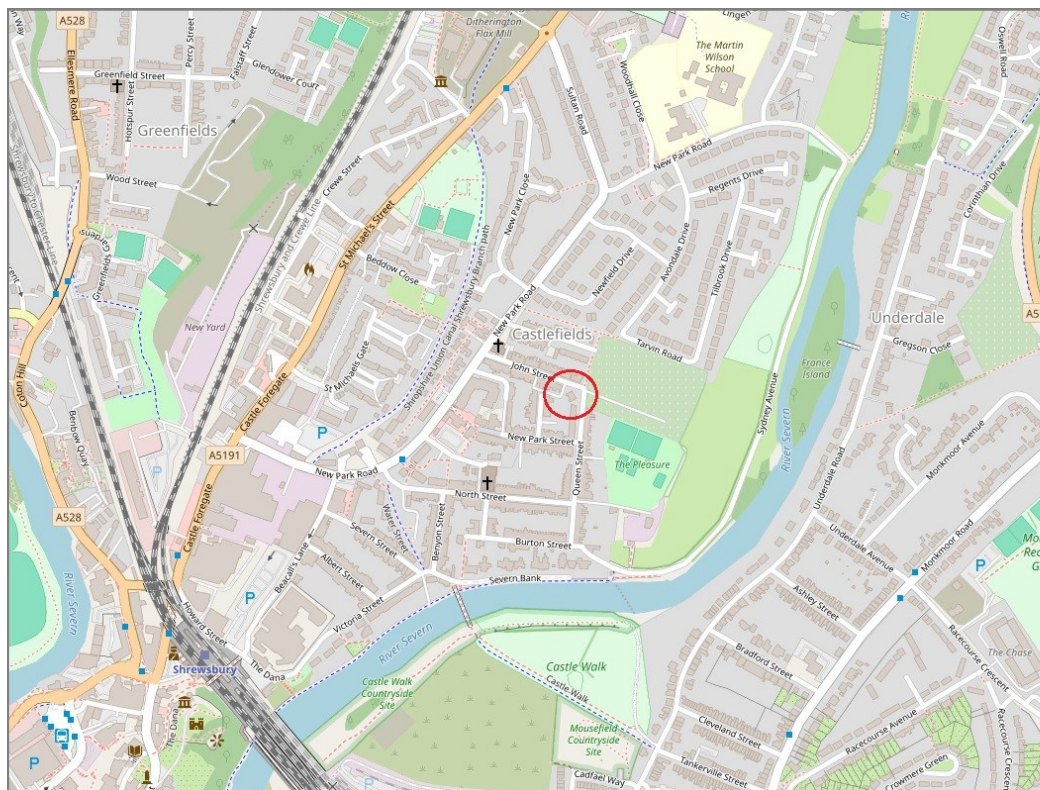
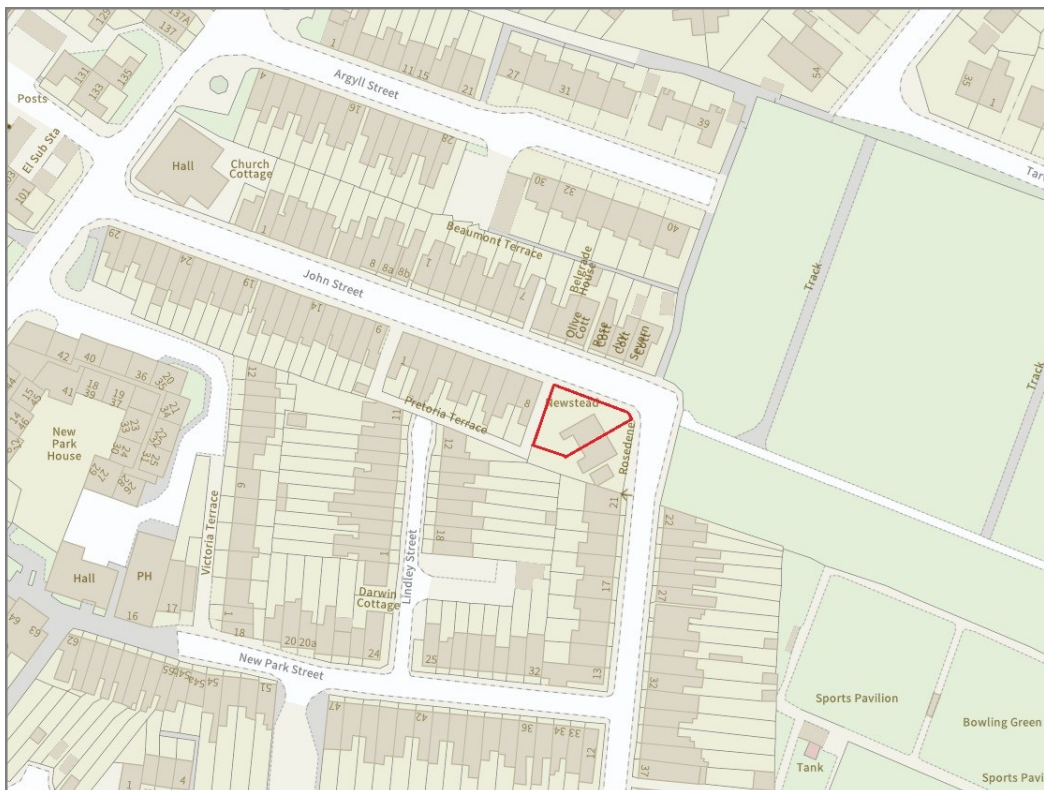
£310,000 Freehold — 3 bedroom semi-detached house

sales@cgpooks.co.uk

rightmove

onTheMarket.com

RICS
Regulated by RICS



BOUNDARIES NOT CONFIRMED

Tenure	Freehold
Local Authority	Shropshire Council
Council Tax	Band C
EPC Band	TBC
Services	Mains water, electricity and drainage are connected. Gas connected.

Expert mortgage advice available

3 Barker St, Shrewsbury SY1 1QF

Cooper Green Pooks
01743 276666



Your home may be repossessed if you do not keep up repayments on your mortgage.

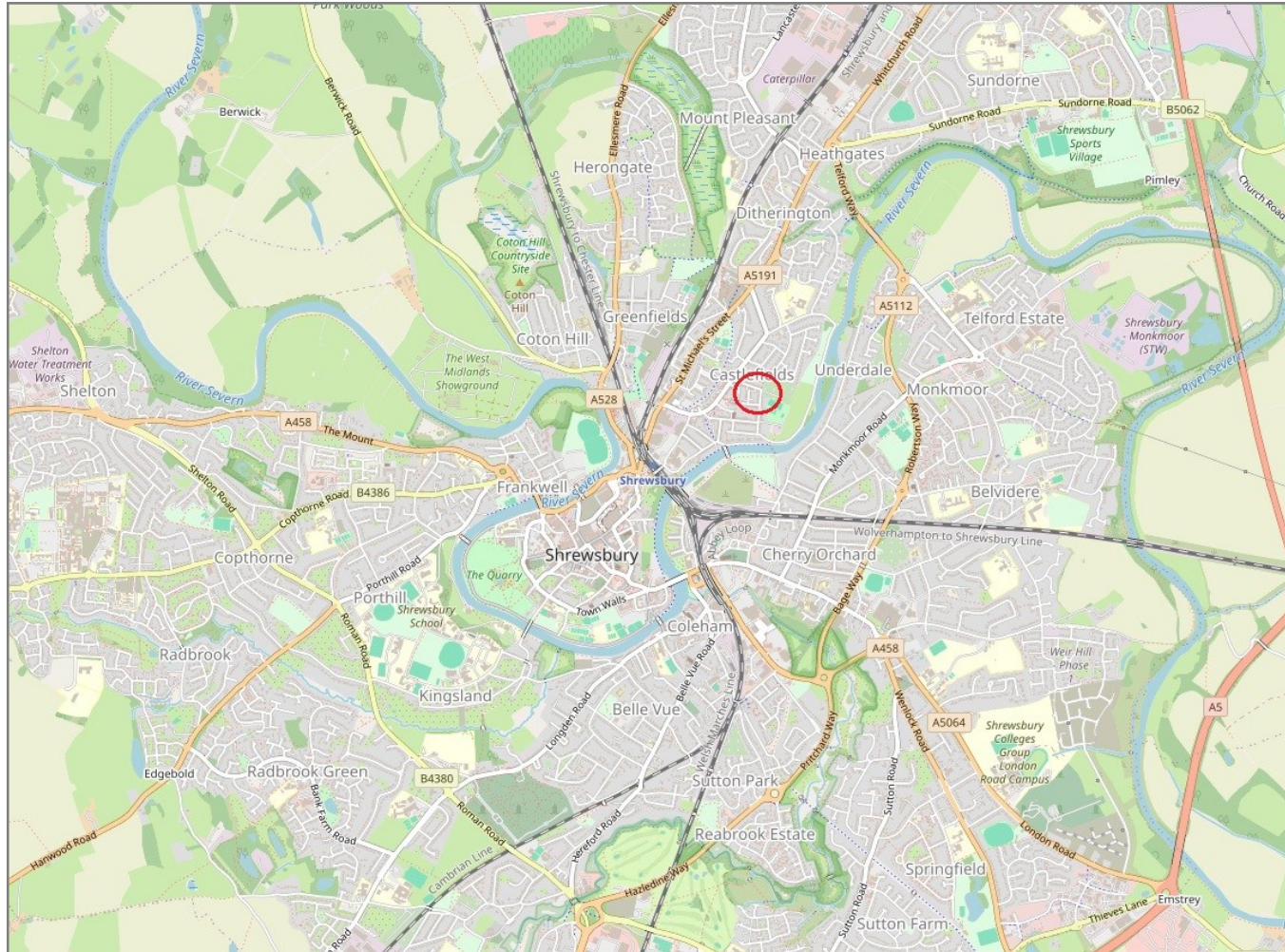
There may be a fee for mortgage advice. The actual amount you pay will depend upon your circumstances. The fee is up to 1% but a typical fee is 0.3% of the amount borrowed.

Newstead, John Street, Castlefields, Shrewsbury, SY1 2SB

Coopergreenpooks.co.uk

£310,000 Freehold — 3 bedroom semi-detached house

sales@cgpooks.co.uk



IMPORTANT NOTICE: Cooper Green Pooks for themselves and for the lessors or vendors of this property whose agents they are give notice that: 1 No appliances, services or service installations have been tested and no warranty as to suitability or serviceability is implied. Any prospective purchaser or lessee is advised to obtain verification from their surveyor or solicitor. 2. The particulars are set out as a general outline only for the guidance of the intended purchasers or lessees and do not constitute, nor constitute part of, an offer or contract. 3. All descriptions, reference to condition and necessary permissions for use and occupation and other details are given in good faith and are believed to be correct but any intending purchasers or lessees should not rely on them as statements or representation of fact but satisfy themselves by inspection or otherwise as to the correctness of each of them. 4. No person in the employment of Cooper Green Pooks has any authority to make or give any representation or warranty whatsoever in relation to this property. 5. All rentals and prices are quoted exclusive of Stamp Duty, legal and surveyors fees and any other associated purchasers or lessees costs. 6. Floor plans are indicative only and should not be relied on. 7. The plan showing the boundary of the property is indicative only and has not been checked against the legal title so should not be relied on. 8. All dimensions, floor areas and site areas are only approximate and should not be relied on. Dimensions are generally maximum room dimension.