



16, Fielding Close, Bicton Heath, Shrewsbury, SY3 5GD
£1,250 Per Month



16, Fielding Close, Bicton Heath, Shrewsbury, SY3 5GD

£1,250 Per Month

VIRTUAL TOUR AVAILABLE: Superb recently built three bedroom semi-detached house located in a new development off Welshpool Road, a short distance to the west of Shrewsbury town centre. Benefitting from excellent school catchments, access to the ring road and close to Royal Shrewsbury Hospital.

Available: Immediately

Description

Comprising: Entrance lobby, downstairs WC, living room, kitchen including integrated appliances, dining area with double doors to rear and understairs cupboard. Stairs to first floor landing including airing cupboard, master bedroom including fitted wardrobes and ensuite shower room, double bedroom, single bedroom, family bathroom including shower. Gas central heating, double glazing and solar panels. Attractive rear garden including patio. Driveway parking for two cars, including EV charger. EPC B

*Please note rear garden will have new turf laid prior to tenancy starting and blinds/poles will be erected at the windows.



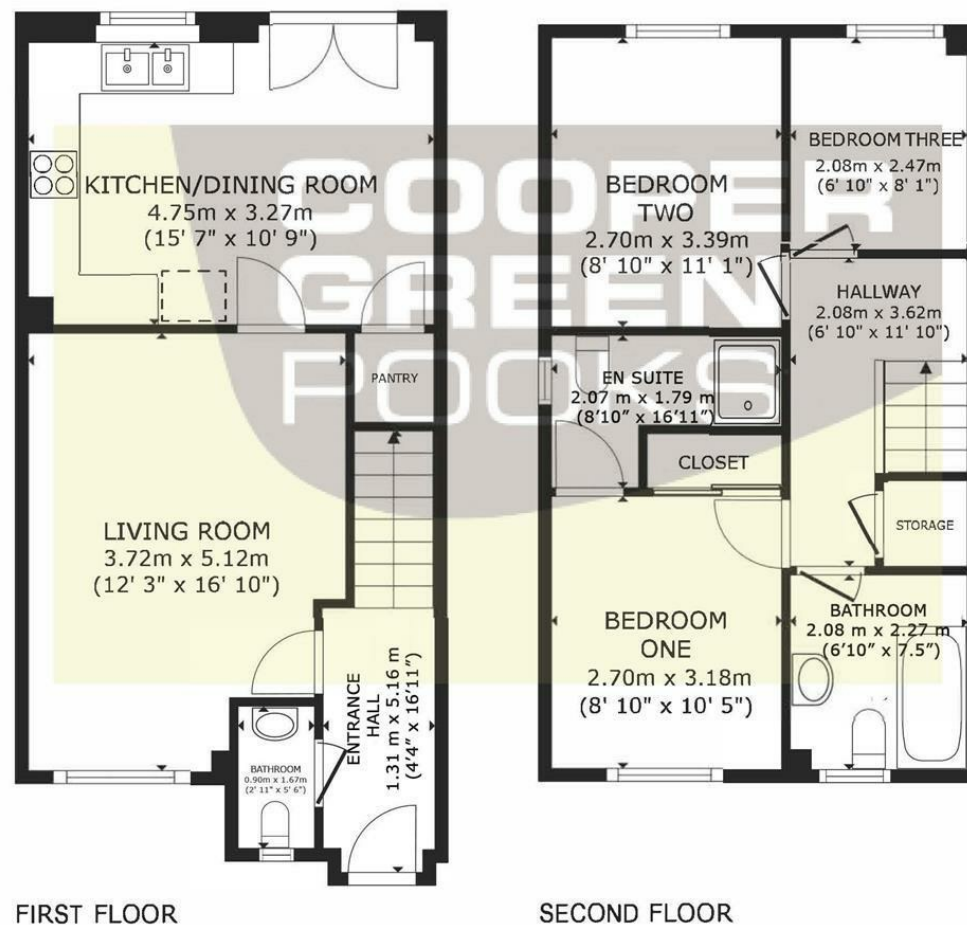
Unfurnished

Council Tax Band: New Build

Available: 27th March 2026

EPC: B

Floor Plans



GROSS INTERNAL AREA
 FIRST FLOOR 43.6 m² (469 sq.ft.) SECOND FLOOR 2 41.7
 m² (449 sq.ft.) TOTAL : 85.3 m² (918 sq.ft.)
 SIZES AND DIMENSIONS ARE APPROXIMATE, ACTUAL MAY VARY.

These particulars, whilst believed to be accurate are set out as a general outline only for guidance and do not constitute any part of an offer or contract. Intending purchasers should not rely on them as statements of representation of fact, but must satisfy themselves by inspection or otherwise as to their accuracy. No person in this firm's employment has the authority to make or give any representation or warranty in respect of the property.