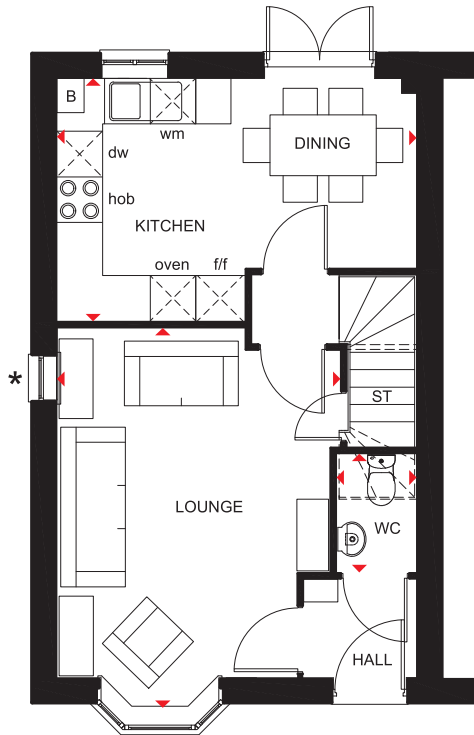


THE KENNETT

THREE BEDROOM END-TERRACED HOME

Key

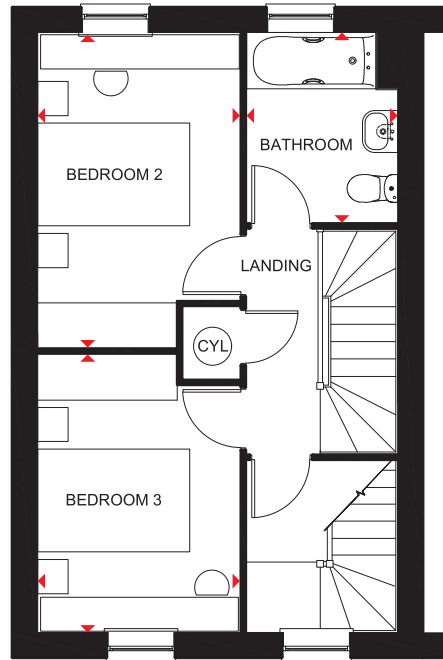
B	Boiler	wm	Washing machine space	RL	Rooflight
ST	Store	dw	Dishwasher space		
f/f	Fridge/freezer space	◀▶	Dimension location		



Ground Floor

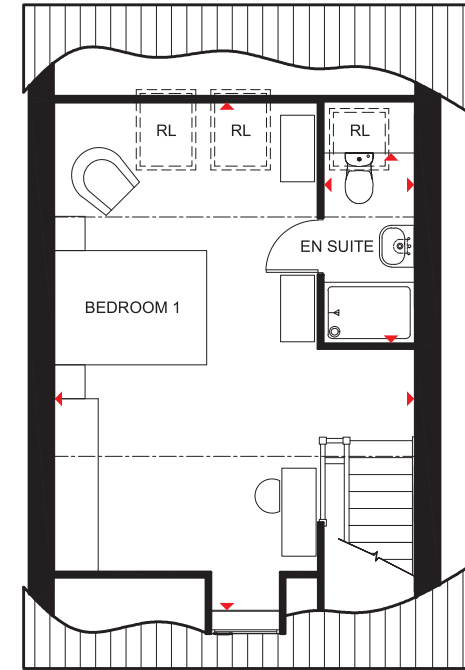
Lounge	5001 x 3729 mm	16'4" x 12'2"
Kitchen/Dining	4733 x 3197 mm	15'6" x 10'5"
WC	1561 x 1054 mm	5'1" x 3'5"

*Window may be omitted on certain plots. Speak to a Sales Adviser for details on individual plots.



First Floor

Bedroom 2	4116 x 2659 mm	13'6" x 8'8"
Bedroom 3	3658 x 2659 mm	12'0" x 8'8"
Bathroom	2498 x 1985 mm	8'2" x 6'6"



Second Floor

Bedroom 1	6681* x 4733 mm	21'11"* x 15'6"
En suite	1189* x 2497 mm	3'11"* x 8'2"

*Overall floor dimension includes lowered ceiling areas

We are on the New Homes Quality Code register of registered developers. "We" refers to the Barratt Developments PLC group brands including Barratt London, Barratt Homes and David Wilson Homes. All images used are for illustrative purposes. These and the dimensions given are illustrative for this house type and individual properties may differ. Please check with your Sales Adviser in respect of individual properties. We give maximum dimensions within each room which includes areas of fixtures and fittings including fitted furniture. These dimensions should not be used for carpet or flooring sizes, appliance spaces or items of furniture. All images, photographs and dimensions are not intended to be relied upon for, nor to form part of, any contract unless specifically incorporated in writing into the contract. BDW001919/OCT22

dwh.co.uk



DAVID WILSON HOMES

WHERE QUALITY LIVES